

# A safer community for all



## Frankston City Safer Communities Policy and Strategy

Overview of community engagement outcomes and crime statistics analysis

# Acknowledgement of Country



Frankston City Council acknowledges the Bunurong people of the Kulin Nation as the Traditional Custodians of the lands and waters in and around Frankston City, and value and recognise local Aboriginal and Torres Strait Islander cultures, heritage and connection to land as a proud part of a shared identity for Frankston City.

Council pays respect to Elders past and present and recognises their importance in maintaining knowledge, traditions and culture in our community.

Council also respectfully acknowledges the Bunurong Land Council as the Registered Aboriginal Party responsible for managing the Aboriginal cultural heritage of the land and waters where Frankston City Council is situated.



# Contents



## Introduction Slide 4

### Engagement details

Slides 5-8

- Work completed
- Discussion topics
- Who we spoke to

### What we've learnt so far

Slides 9-14

- Overview
- Community's top concerns
- Criminal incidents
- Victim reports
- What makes people feel safe

### Outcomes by discussion topic

Slides 15-32

- Safe and resilient communities
- Safe public places and spaces
- Harm reduction
- Safe and respectful relationships
- Reducing homelessness
- Safe and inclusive communities
- Community vision

### Customer Satisfaction Survey

Slides 33-36

- Sense of community
- Perceptions of safety
- Slide 37: Gender data Snapshot

# Introduction



The City Futures Department undertook a community engagement process in 2022 to inform the development of Council's 10-year Safer Communities Policy and Strategy.

This engagement was conducted as an open community consultation process to seek a diverse range of experiences of safety and to hear the community's vision and priorities for a safer municipality.

The consultation involved a range of methods including surveys, online workshops, social media, community pop-ups and a community panel. The results of this process have been analysed alongside research and local crime statistics.

The following provides an overview of the main findings and outcomes.



# Work completed

## Research, data analysis and engagement



### Discussion Paper



Frankston City Council is conducting a broad and inclusive community consultation to inform the development of a Draft Safe Community Policy and Strategy 2022-2032.

Council has committed to developing a Safe Community Policy and Strategy and is conducting this community consultation to encourage a whole of community approach to identifying the key priorities and areas of focus for community safety and crime prevention in Frankston City over the next 10 years. Once developed, the policy and strategy will guide the work of Council and our partners to ensure that we are all working collaboratively towards a safe and inclusive municipality where people feel safe, well connected and welcome to participate in community life.

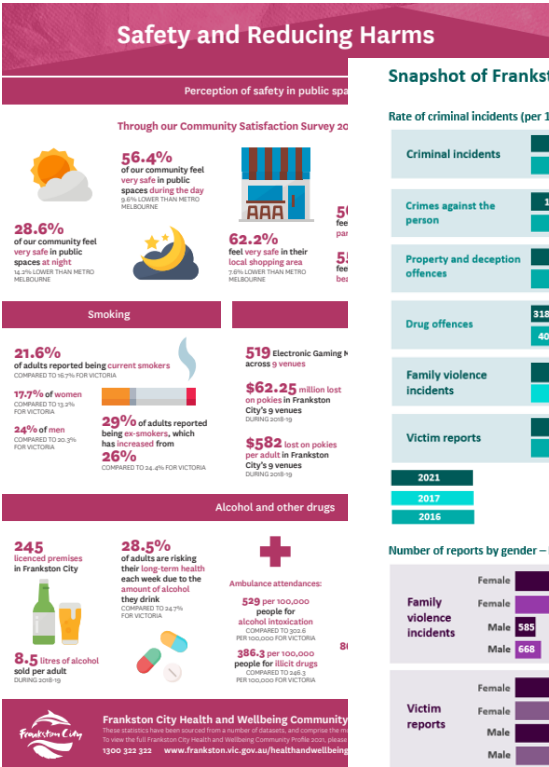
**What's in the Discussion Paper?**

This discussion paper informs how the development of local government policy and strategy can strengthen the safety and resilience of communities, help prevent crime and reduce the impact of emergencies. The paper includes six topics for discussion, as follows:

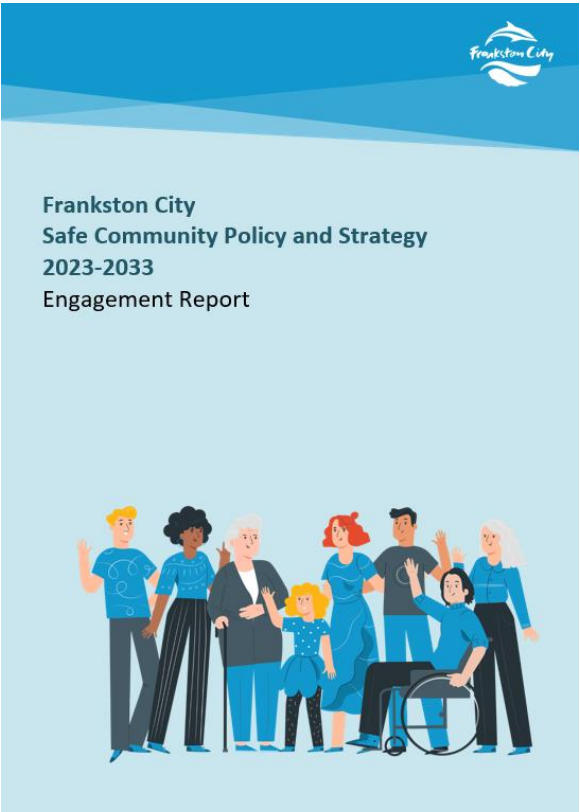
- 1 Safe and resilient communities
- 2 Safe places and spaces
- 3 Harm reduction
- 4 Safe and respectful relationships
- 5 Reducing homelessness
- 6 Safe and inclusive communities

These topics have been developed from what you have already told us and the best available research in community safety and crime prevention. The information in this paper is provided to help you consider the scope of each topic and guide thinking around key priorities and areas of focus for the draft policy and strategy. We encourage you to visit our Engage Frankston website and complete the survey to have your say.

### Data analysis



### Engagement



# Community engagement

Based on six discussion topics



## Topic 1 Safe and resilient communities

Building community resilience to risks and threats like natural disasters and public health emergencies

## Topic 2 Safe public places and spaces

Creating safe public spaces through urban design and placemaking

## Topic 3 Harm reduction

Creating safe communities to reduce harms from alcohol, drugs, gambling, road trauma, violence and crime

## Topic 4 Safe and respectful relationships

Building partnerships to prevent family violence, violence against women and elder abuse

## Topic 5 Reducing homelessness

Building partnerships to reduce and prevent homelessness and support equitable access to safe, secure and affordable housing

## Topic 6 Safe and inclusive communities

Creating inclusive and well connected communities where everyone feels welcome

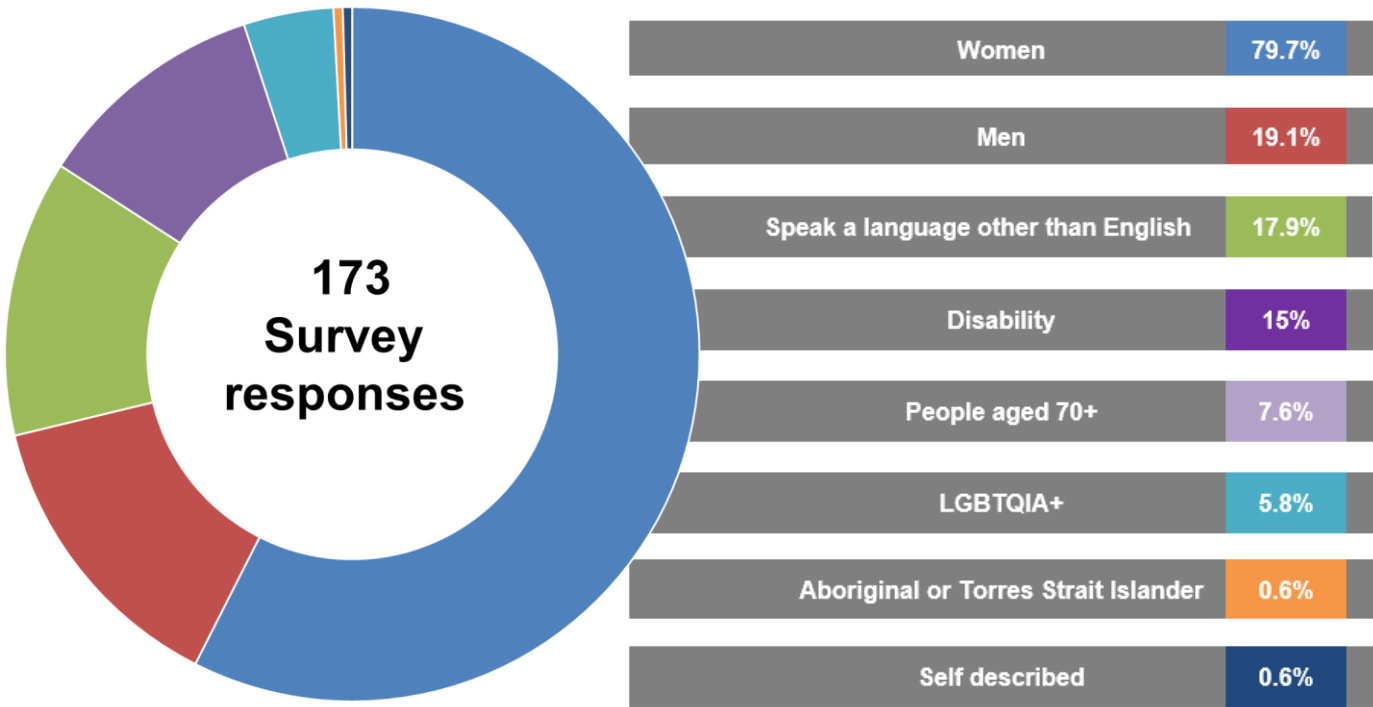
# Who we spoke to

## Broad community consultation

ENGAGEMENT TYPE	Engagement platform	Community survey	Targeted workshops	Community panel	Events	Community pop-ups	Social media
PARTICIPANTS	1,016 unique visitors	173 responses	50+ people	9 people	20+ people	100+ people	1,296 engagements 71 comments
ACTIVITIES / DETAILS	<ul style="list-style-type: none"> <li>Online survey</li> <li>Community services online survey</li> <li>Discussion Paper</li> <li>Infographics</li> </ul>	<p>Online</p> <ul style="list-style-type: none"> <li>Engage Frankston</li> </ul> <p>Hardcopies</p> <ul style="list-style-type: none"> <li>Libraries</li> <li>Customer Services</li> </ul> <p>Other options</p> <ul style="list-style-type: none"> <li>Mailed by post</li> <li>Telephone interview</li> </ul>	<ul style="list-style-type: none"> <li>Disability Access and Inclusion Committee</li> <li>Youth Council</li> <li>Positive Ageing Ambassadors</li> <li>LGBTQIA+ Collaborative</li> <li>Local Safety Committee</li> <li>Langwarrin Mosque</li> </ul>	<ul style="list-style-type: none"> <li>Lyrebird Community Centre</li> <li>Key issues</li> <li>Actions</li> <li>Vision</li> </ul>	<ul style="list-style-type: none"> <li>Wear It Purple, LGBTQI+ youth event</li> </ul>	<ul style="list-style-type: none"> <li>Wells Street Plaza, Frankston's City Centre</li> <li>Sandfield Reserve, Carrum Downs</li> </ul>	<ul style="list-style-type: none"> <li>3 Facebook posts</li> </ul>
PLANNED ACTIVITIES THAT DIDN'T PROCEED			<ul style="list-style-type: none"> <li>Chinese Seniors Group</li> <li>Nairn Marr Djambana</li> </ul>		<ul style="list-style-type: none"> <li>Mayor's Picnic</li> </ul>		

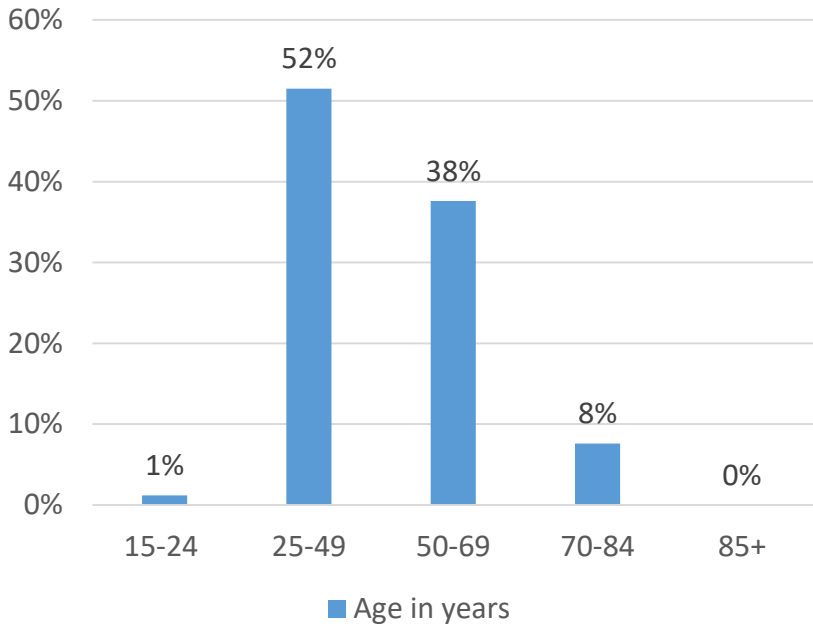
# Who we spoke to

## Community survey demographics



Additional targeted surveys	Completed
Community service organisations	9
LGBTQIA+	8
Culturally and linguistically diverse	3
TOTAL	20

Community survey age groups



Community survey - local area of residence

- 31.8% Frankston
- 19.1% Frankston South
- 14.5% Seaford
- 12.1% Langwarrin
- 6.4% Karingal
- 5.8% Carrum Downs
- 4.1% Frankston North
- 2.9% Sandhurst
- 1.7% Skye
- 1.2% Other
- 0.6% Langwarrin South



# What we've learnt so far

## Overview



# What we have learnt so far

## The community's top concerns



### Safe and resilient communities

Impacts of natural disasters and health emergencies

### Safe places and spaces

Personal safety in public places

Crime and violence

Personal safety in Frankston's City Centre

### Harm reduction

Harms from alcohol, drugs or gambling

Anti-social behaviour

Road safety

### Safe and respectful relationships

Violence against women and children

Sexual harassment

### Reducing homelessness

Access to secure, safe and affordable housing

### Safe and inclusive communities

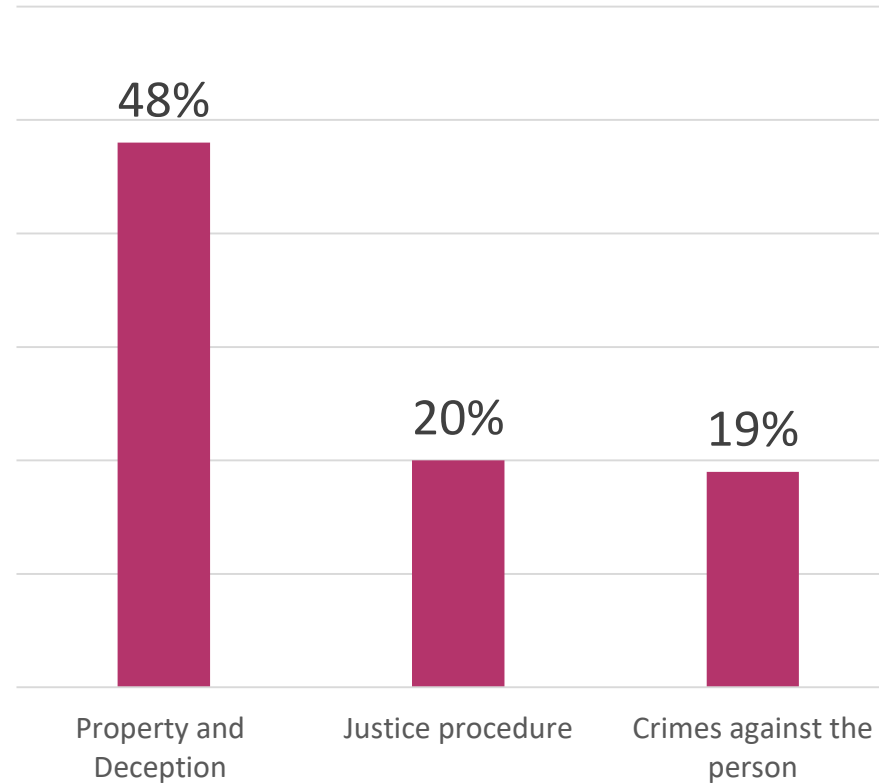
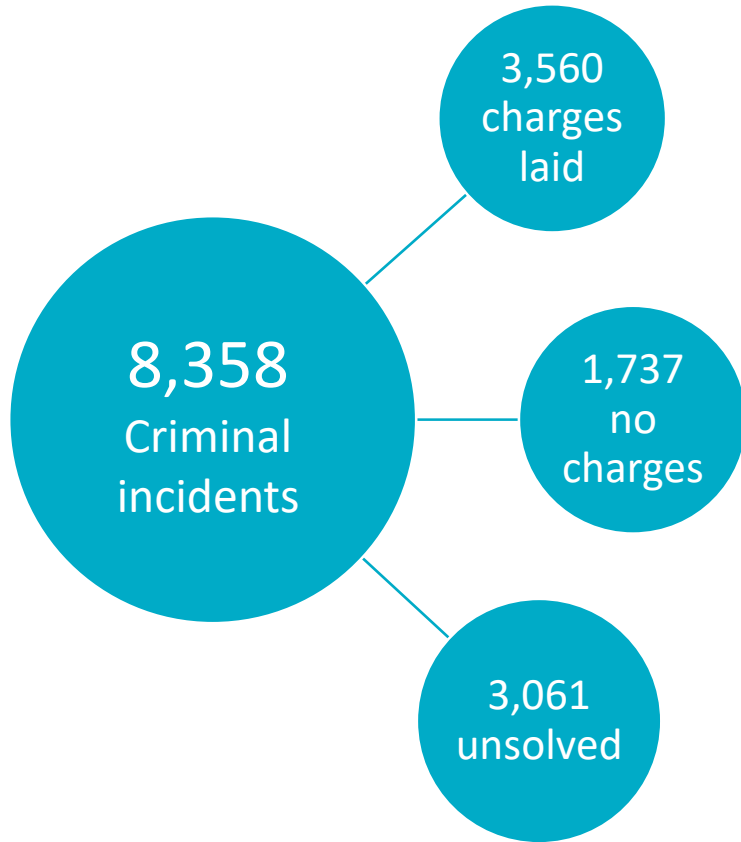
Lack of social connection

Racism

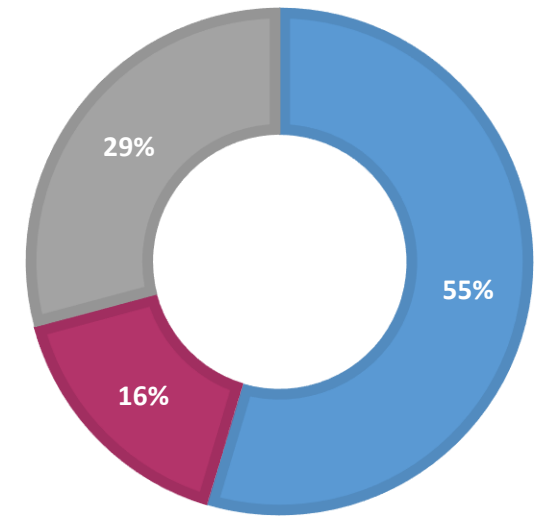
Discrimination

# Criminal Incidents

Rates are falling, but still amongst the highest in Metro Melbourne



- Private dwelling
- Frontyard driveway
- Street/footpath

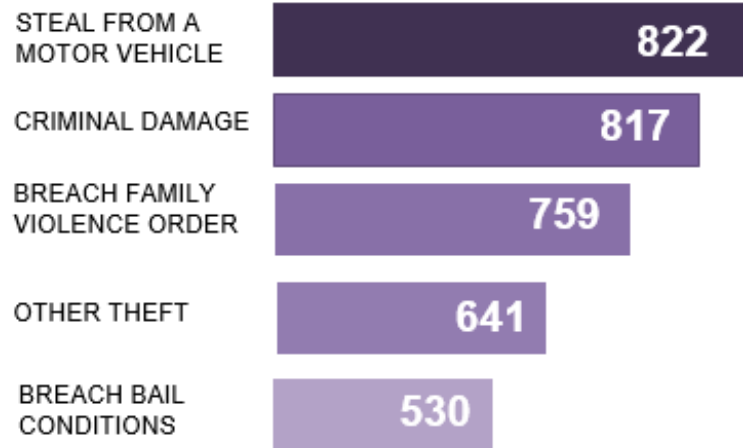


# Criminal Incidents

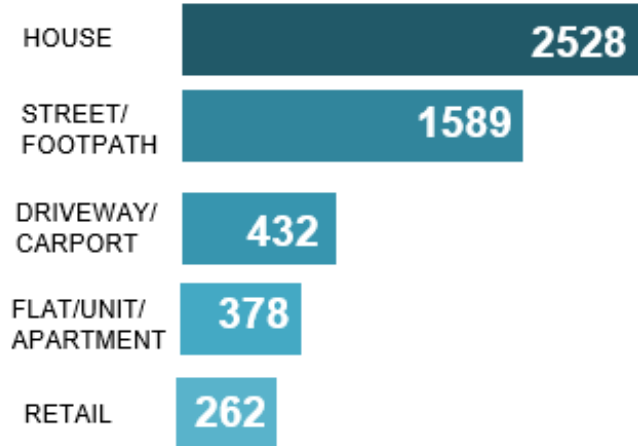
## Top offences



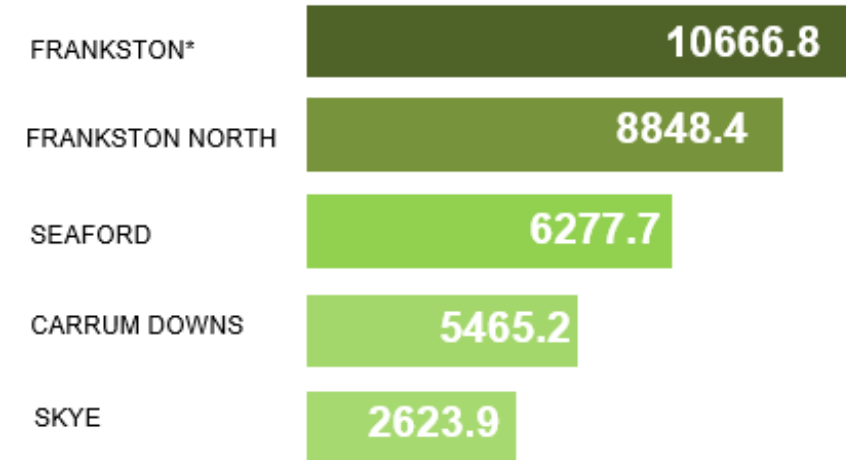
### Top 5 offences



### Top 5 locations types



### Top 5 suburbs – rate/ 100,000



\*Includes Frankston Central, Frankston Heights and Karingal

All of these rates are down from the previous year!

# Victim reports

Declining 5 year trend, but still higher than average



10<sup>th</sup>

highest rate in Metro Melb.

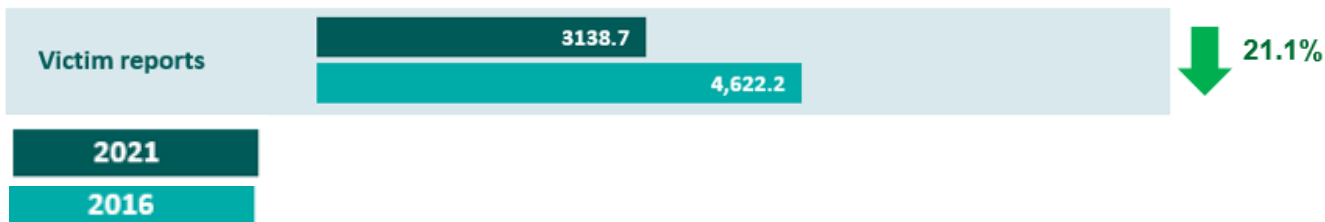
- Decreasing at a faster rate than average
- Majority of reports were for property and deceptions
- Majority of victims were 25-34 years
- Majority of victims were male

Property and  
deception  
reports in 2021

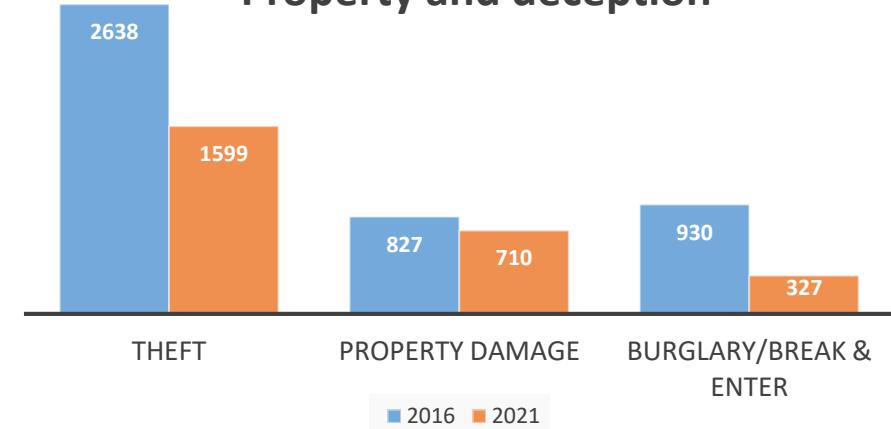
2828

Crimes against  
the person  
reports in 2021

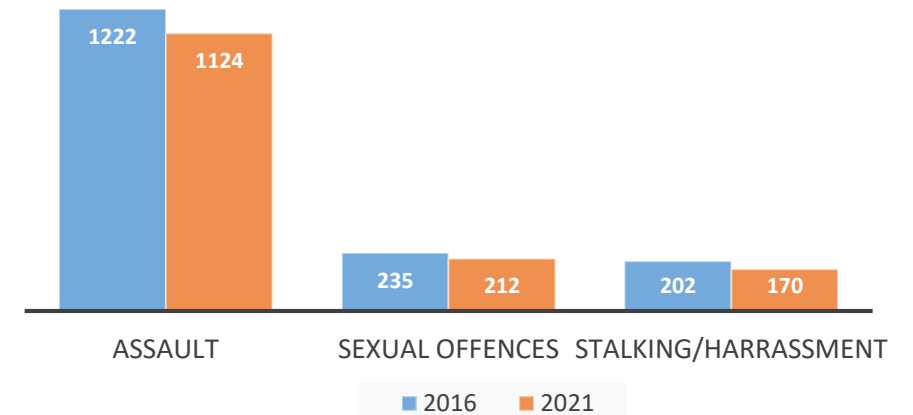
1653



## Property and deception



## Crimes against the person





# What makes people feel safe?



## What the community does to help people feel safer

### Community survey

Well used community facilities	50.3%
Well used local shops	49.7%
Neighbours know each other	46.8%
Well maintained open space	46.8%
Local communities connected on social media	39.9%
Neighbours stop and chat	37.0%
Good visibility in the street	36.4%
Neighbours help each other	33.5%

## Actions Council can take to make Frankston City safer

Creating and maintaining safe and accessible public spaces, parks and reserves



Work with specialist support services to assist vulnerable community members



Work with emergency services like police and ambulance to respond to community safety issues



Work with services and community groups on initiatives to reduce harms from alcohol drugs and gambling



Creating and maintaining community facilities (like libraries and community centres)

# Topic 1

## Safe and resilient communities



### Community engagement

- Impacts of natural disasters and public health emergencies are a high priority for people with a disability
- Main concerns are around the ability to get help during emergency events
- Safety of vulnerable people during extreme weather events is also important
- The Community Panel identified Council should take action on climate change such as design of climate resistant buildings and open spaces

### Main safety concerns identified through the community survey

1. Safety of vulnerable people (58%)
2. Extreme weather events, like storms and heatwaves (58%)
3. Long-term social and economic impacts (50%)
4. Safety of home during and after an emergency (43%)
5. Safety of family (42%)

### Safety rating of emergency events and resilience in local areas

Very unsafe		Safe		Very safe
1	2	3	4	5
7.6%	17.5%	50%	18.6%	6.4%

# Topic 1

## Safe and resilient communities



### Actions Council can take

#### Disability Access and Inclusion

- Provision of disaster/emergency information for people with a disability (consider lack of internet and phone lines)
- Register of people with a disability for welfare checks in an emergency/disaster
- Beacon technology to transmit signals to smart devices

#### LGBTQIA+

- Emergency relief centres need to be inclusive, safe and respectful of diverse communities
- Review emergency management practices and processes
- Establish climate change networks to increase capacity and knowledge in the community

#### Community panel workshop

- Sustainability workshops, tree planting and rain gardens
- Infrastructure and grants to support water storage
- Improved communication and support from Council during emergencies
- Improved planning to address climate change
- Alternative channels to alert of emergencies

## Topic 2

# Safe public places and spaces



### Community engagement

- Personal safety in public places rated as top issue across all engagement activities
- Feeling safe in public spaces during both the day and night is a common theme
- Lighting, graffiti and cleanliness all identified as impacting perceptions of safety

### Community survey top 5 safety concerns

1. Personal safety at night (85%)
2. Hoon driving (71%)
3. Inadequate lighting at night (60%)
4. Personal safety in parks and reserves (58%)
5. Vandalism / graffiti (56%)

### Safety rating of public spaces in local areas

Very unsafe		Safe		Very safe
1	2	3	4	5
7%	33%	45%	11%	4%

## Topic 2

# Safe public places and spaces



### Targeted conversations

#### Young people

- Experience harassment in public places
- Negative perceptions of safety in specific public places such as in the city centre, train stations and public toilets

#### Older people

- Safety getting to public places - road and pedestrian safety
- Dementia safe cities increase safety

#### People with a disability

- Experience discrimination

#### LGBTQIA+

- Antisocial behaviour and harassment from drug and alcohol affected people
- Real and perceived physical safety when moving around in public places, businesses, public toilets
- Online safety
- Security and hotel staff not trained in managing discrimination



# Topic 2

## Safe public places and spaces



### Actions Council can take

#### Disability Access and Inclusion Committee

- Universal design to improve accessibility for all
- Programs with volunteers to support people accessing local shops, public transport and participating in the community
- Address social discrimination experienced and educate people on differences in behaviour due to disabilities – this can often be misinterpreted
- Ensuring accessibility at all events and festivals including sufficient public toilets
- Support youth unemployment
- Use colours in wayfinding
- Use volunteers and charitable organisations to provide increased presence in public places

#### Community Panel workshop

- Improved lighting and CCTV– particularly in areas with known occurrence of anti-social behaviours
- Improved reporting processes to action general cleanliness and maintenance
- Rails and bollards around parks to stop vehicles entering
- Advocate to State Govt to action annual maintenance on major roads and arterials

#### Youth Council

- Measures to improve safety in public toilets, bathrooms and Frankston City at night
- Use technology (e.g. phone app) to find nearest police patrol to get help quickly
- Subsidised safety equipment for young people
- Promote places people feel safe online

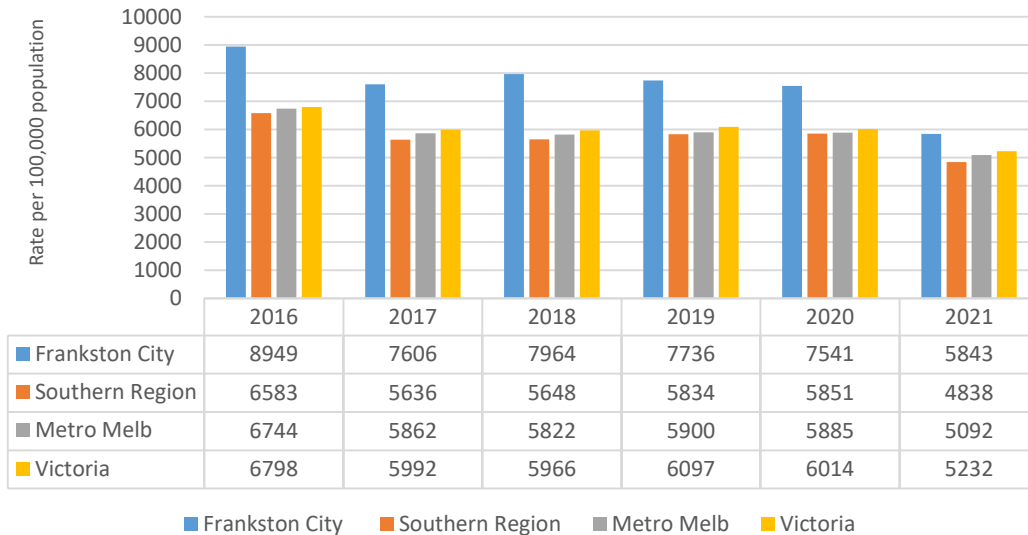
# Topic 2

## Safe public places and spaces



### Criminal Incidents 5 year trend

Year ending December 2021



- Frankston City criminal incident rate has been higher than average over the past 5 years, but has declined at a faster rate
- Property and deception offences account for nearly half of all criminal incidents
- Crimes against the person are declining at a slower rate than other offences

### Top 5 offences

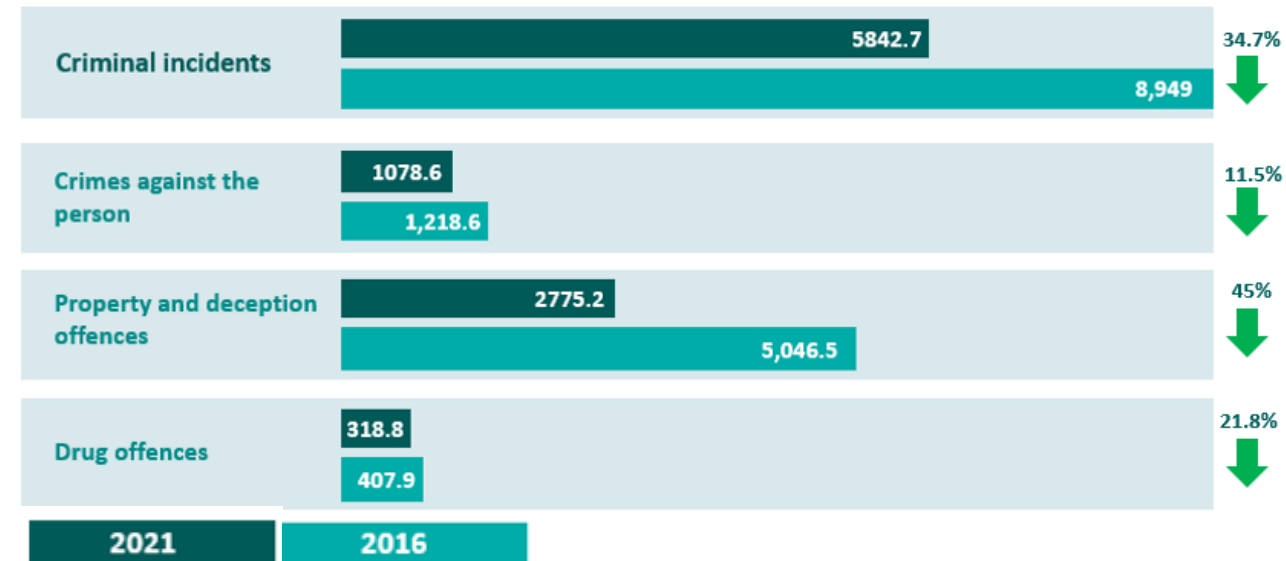
1. Steal from a motor car
2. Criminal damage
3. Breach family violence order
4. Other theft
5. Breach bail conditions

ALL ARE HIGHER THAN THE VICTORIAN AVERAGE EXCEPT FOR 'OTHER THEFT'

8,358  
CRIMINAL INCIDENTS  
IN 2021

3,932  
MAJORITY OF CRIMINAL  
INCIDENTS OCCUR  
IN A RESIDENTIAL  
LOCATION

### Rate of criminal incidents (per 100,000 people) – Five year trend (year ending December)



# Topic 3

## Harm reduction



### Community engagement

- Over half of community survey respondents (59%) rated their local area as unsafe or very unsafe
- Harm reduction ranked as second highest priority by the community
- Antisocial behaviour such as monkey bikes, hooning and drinking
- Harms from alcohol and other drugs is of concern to young people, the LGBTQI+ community and community service organisations
- Road safety is ranked as a high priority by older people
- The Community Satisfaction Survey identified harm from drugs and alcohol as the most common reason for people not feeling safe in public places

### Community survey top 5 safety concerns

1. Harm from drug use (78%)
2. Crime (72%)
3. Violence (66%)
4. Risky alcohol use (64%)
5. Road safety for pedestrians (47%)

### Safety rating of harms from alcohol, drugs, gambling, road trauma, violence and crime in local areas

Very unsafe		Safe		Very safe
1	2	3	4	5
13.9%	45.1%	31.8%	6.9%	2.3%

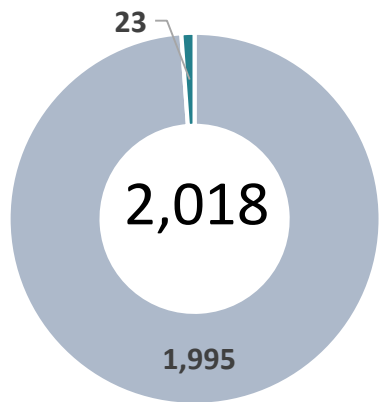
# Topic 3

## Harm reduction



### Deaths related to alcohol and illicit drugs 2011-2020

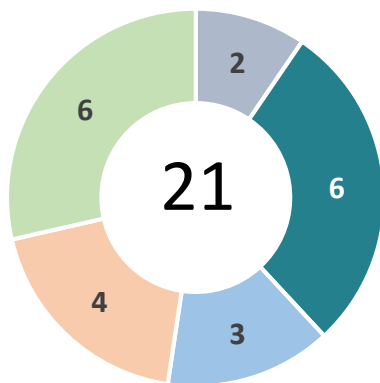
AODstats by Turning Point



■ Alcohol ■ Illicit drugs (any)

### TAC fatalities 2016 – 2021

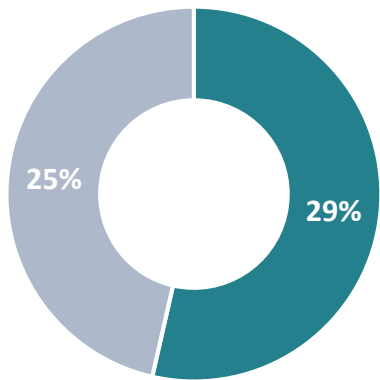
TAC Transport Accident Commission



■ Bicyclist ■ Driver  
■ Motorcyclist ■ Passenger  
■ Pedestrian

### Lifetime risk of harm from alcohol (weekly)

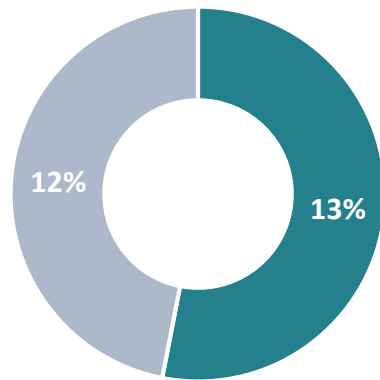
Victorian Population Health Survey, 2017



■ Frankston City ■ Victoria

### Risk of alcohol-related injury from a single occasion of drinking (weekly)

Victorian Population Health Survey, 2017



■ Frankston City ■ Victoria

## Targeted conversations – main safety concerns

### Community panel workshop

- Home safety / break-ins
- Neighbourhood Safety
- Crime prevention
- Traffic Speed

### Youth Council

- People use public toilets to take drugs
- Teen substance abuse / drug abuse common at school
- Attitudes towards alcohol encourage young people to drink too much
- Drink driving

### LGBTQIA+

- Dangerous people are around, a lot on drugs
- Drug and alcohol affected people at Frankston Train Station harass others
- Police don't take enough action to stop people on drugs
- Alcohol and other drug use can be a symptom of other issues and be a coping mechanism – including not feeling safe



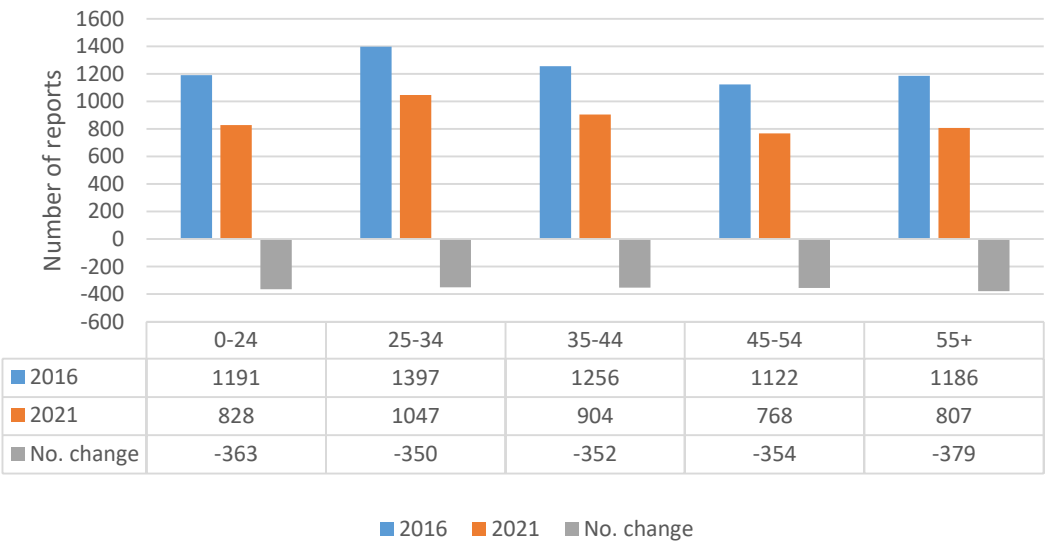
# Topic 3

## Harm reduction

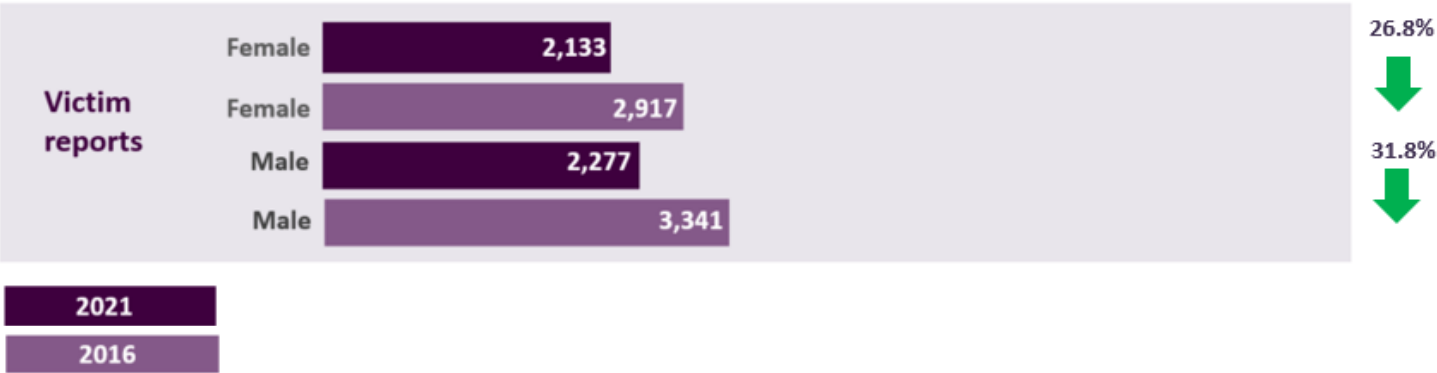


Year ending December

Victim reports 2016–21 by age group, 5 year trend



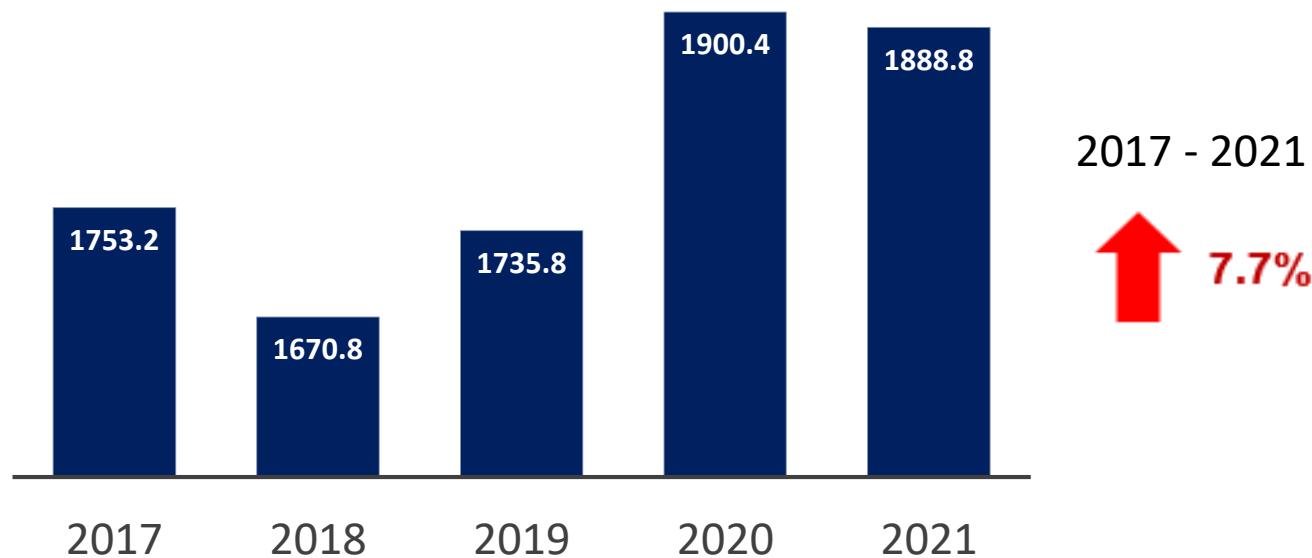
- Declining trend in the number of victim reports from 2016 to 2021
- People aged 25-34 years have the highest recorded reports
- More male victim reports compared to female, however both have declined since 2016



## Community engagement

- Violence against women and children identified as the third highest priority for the community and as the main safety concern for community services
- High priority for young people particularly in relation to sexual harassment of young women
- Older people also rated this as a safety concern
- The top concerns from the community survey identified:
  - Attitudes and behaviours that condone violence (73%)
  - Sexual assault and harassment (62%)
  - Safety of women and children (61%)
  - Attitudes towards women (61%)
  - Safety of all family members (58%)

## Rate of family violence incidents



## Safety rating of family violence in local areas

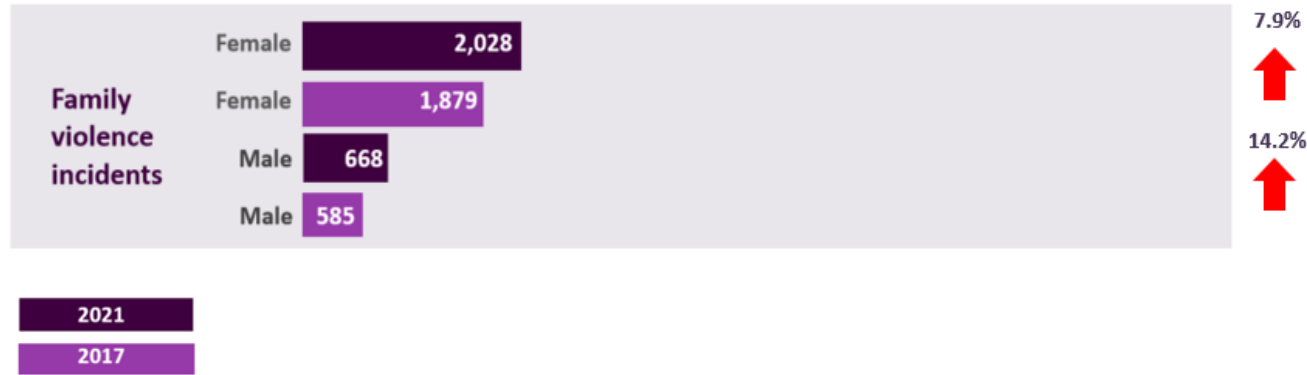
Very Unsafe		Safe		Very Safe
1	2	3	4	5
8.7%	26.0%	50.9%	8.7%	5.8%

# Topic 4

## Safe and respectful relationships

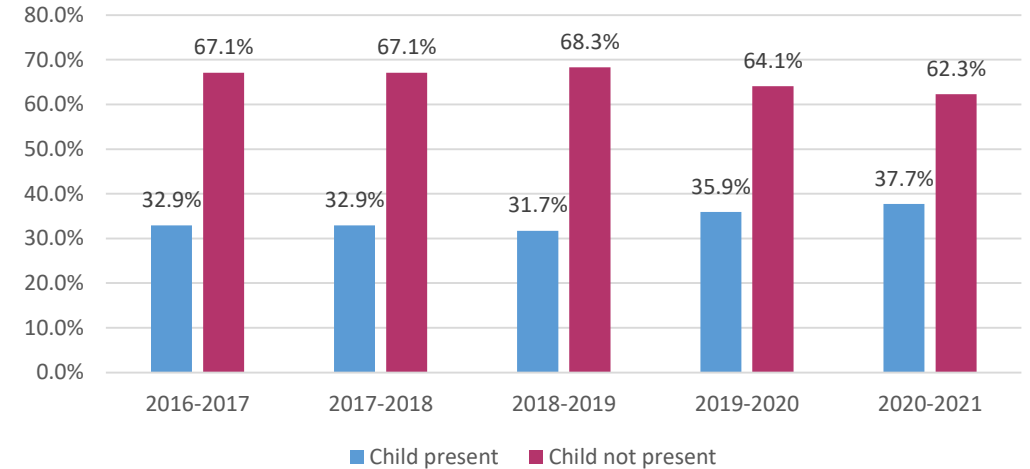


Number of reports by gender – Five year trend (year ending December)



Family violence incidents where a child was present 2016 -21

Year ending December



- Frankston City has the highest rate of family violence incidents across all Metropolitan Melbourne
- This rate has been increasing over time, however the increase has been slower than most other LGA's
- Females are three times more likely than males to be affected by family violence
- The majority of Family Violence victims are aged 25-44 years
- The largest increase in incidents have been for people aged 55+ years
- The number of children present at family violence incidents has been increasing over time, however they are recorded as not present in the majority of incidents (62%)



Family Violence victims

Females **2,028**  
Males **668**

**3x**

Females more likely to be a victim of family violence



Family Violence perpetrator

Females **688**  
Males **2,007**

**3x**

Males more likely to be a perpetrator of family violence

## Targeted conversations – concerns and actions

### Youth Council

- Sexual harassment is a high priority and prevents young people from going to the city centre

### LGBTQIA+

- More emphasis in Respectful Relationships curriculum on full spectrums of gender and sexual identities
- Gender Equality kit in every school
- Information for families with gender diverse members
- Raise awareness and educate on rigid gender roles and how this intersects with gender identity and sexuality
- Increased education about the LGBTQIA+ community to the broader population

### Positive Ageing

- Family violence prevention education for children and young people

# Topic 5

## Reducing homelessness

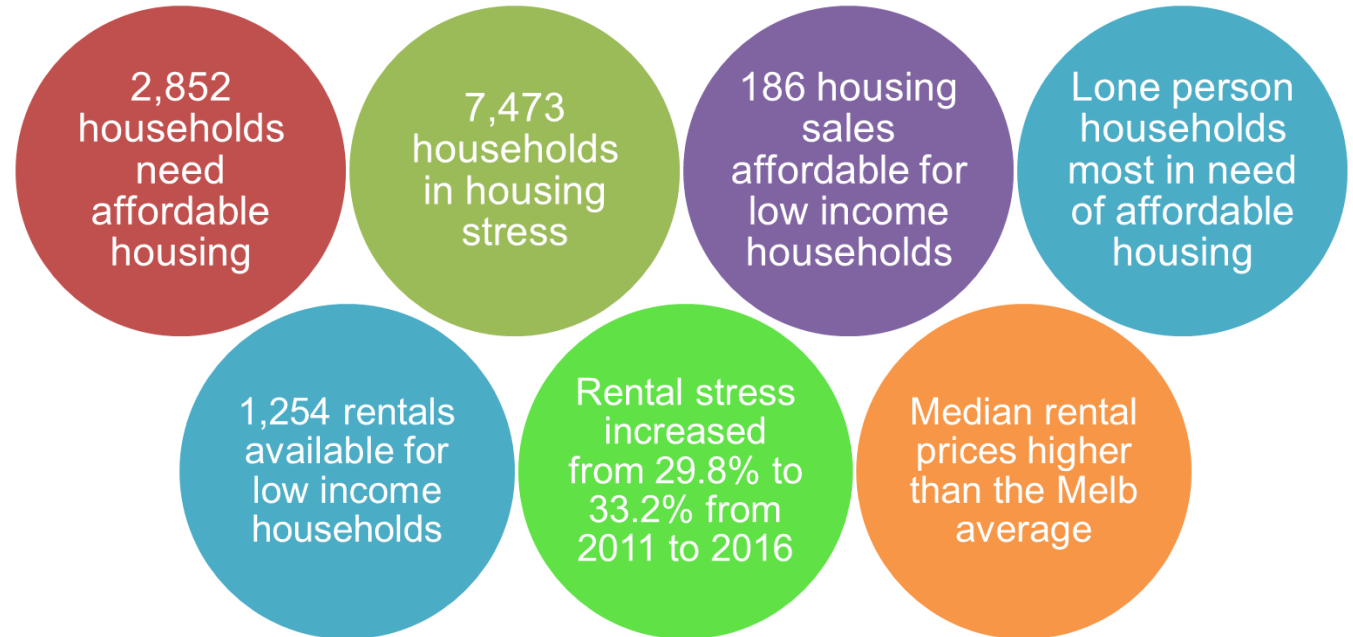


### Community engagement

- Access to secure, safe and affordable housing was ranked as a high priority by community service organisations

#### Top 5 safety concerns from community survey:

1. Access to secure, safe and affordable housing (81%)
2. Knowing where to get help and support for people experiencing homelessness (71%)
3. Personal health and safety of people experiencing homelessness (69%)
4. Access to support services (66%)
5. Negative attitudes towards people experiencing homelessness (59%)



### Safety rating of homelessness in local areas

Very Unsafe		Safe		Very Safe
1	2	3	4	5
12.3%	35.1%	36.8%	11.1%	4.7%

# Topic 5

## Reducing homelessness



### TARGETED CONVERSATIONS

#### Top concerns

##### LGBTQIA+

- There is a lack of specific housing services that are culturally safe for queer communities
- Young LGBTQIA+ people experience higher rates and risks of becoming unhoused due to rejection from family on the basis of sexual or gender identity

##### Community panel workshop

- Housing access including affordability and social housing gaps
- There are safety concerns for those who are homeless

#### Actions Council can take

##### LGBTQIA+

- Advocate for support for specialist services
- Dedicated LGBTQIA+ Housing service
- Advocated for higher numbers of social and affordable housing

##### Community panel workshop

- Developer contribution policy

# Topic 6

## Safe and inclusive communities



### Community engagement

- Community services are concerned about the safety of people with a disability, older people and children
- Young people and older people identified harassment of the LGBTQIA+ community
- People with disabilities prioritised discrimination including harassment and access to essential services, amenities and public spaces
- Pop-up consultations identified lack of connection between community services and the community

### Community survey rated top 5 concerns:

1. 63% - lack of social connection
2. 46% - racism
3. 43% - discrimination
4. 38% - ageism
5. 37% - lack of trust in the neighbourhood

- 43.5% of adults in Frankston City think that multiculturalism makes life in their area better, which is lower than the Victorian average of 53.4%
- 39.6% of adults in Frankston City feel valued by society, which is lower than the Victorian average of 48.3%

### Safety rating of a safe and welcoming community

Very Unsafe		Safe		Very Safe
1	2	3	4	5
5.2%	28.5%	45.4%	13.9%	6.9%

# Topic 6

## Safe and inclusive communities



### Targeted conversations

#### Community panel workshop

- Online safety
- Lack of social connection for older people; activities are only available 10am – 5pm
- Racism

#### LGBTQIA+

- Real and perceived safety concerns prohibit LGBTQIA+ communities from feeling safe enough to join in

### Actions Council can take

#### Community panel workshop

- Encourage affordable/free activities for older people
- Provide events outside the CBD
- Improve access to events
- Share information about supports available; promote services through rates notices
- Cultural events and activities to provide opportunities for people mix
- A central place for people to connect and get information
- Provide information (e-news) in a variety of languages
- Education to enable people to evaluate information credibility

#### Disability Access and Inclusion

- Address social discrimination and peoples attitudes towards diverse communities

#### LGBTQIA+

- Free capacity building training for businesses and services locally
- LGBTQIA+ exclusivity training for local government staff
- Council to get Rainbow Tick accreditation
- Increase visibility through events and training in the community
- Formal social networks / peer support groups and local opportunities



# What does a safe community look and feel like?

## Community Vision

Across all engagement activities the main themes for a safe community are:

### Feeling safe and secure

- Free to walk in public spaces day or night and participate in the community

### Kindness and empathy

- People looking out for each other, being helpful, respectful and trustworthy

### Connection and sense of belonging

- Feeling valued and part of the community

### Vibrant and welcoming

- Attractive, thriving, art and culture, nature, presence of people

### Community quotes:

*Open spaces, lots of lighting, positive atmosphere*

*One in which people can share thoughts and ideas openly*

*People know their neighbours and community*

*Kind, heart-warming and helping*

*People looking after each other*

*Rejuvenated city*

*Where one can live in peace in a connected neighbourhood and can move about in Frankston safely.*

*A community that feels ownership over the area and as such takes care and respects those and the things within*

*When I can walk alone around Frankston and or surrounding areas - and feel safe to do so - ALONE!*

*A place where everyone feels safe to be themselves both at home and in the community/in public*

# Sense of community

## Annual Community Satisfaction Survey 2022



- Face to face interviews with 803 households completing the survey
- Overall there is a relatively strong sense of community in Frankston City
- On average results indicate strong agreement that Frankston City is:
  - Age-friendly 65.9%
  - Child-friendly 65.2%
  - Could turn to neighbours for help 64.1%
  - Welcoming and supportive of diverse cultures 58.8%
  - Accessible and inclusive for people with a disability 58.8%
  - Vibrant, accessible and engaging community 59.8%

7.3% of people did not agree with the statement 'I feel part of the local community'

Increase of 3.9% in agreement that they could turn to neighbours for help

People in Frankston North have a lower sense of community compared to the other suburbs

Adults aged 35-44 years, older adults (75+ years) and people from a multilingual household feel part of the local community at a higher than average rate

# Perceptions of safety in Frankston City

## Annual Community Satisfaction Survey 2022



Perception of safety in public areas	Increased by an average of 4.2%
Perception of safety in the day versus night	5.1% feel unsafe during the day versus 20.3% at night
Feeling safe during the day	76.6% feel very safe in public spaces during the day compared to 70.4% in 2021
Feeling safe at night	38.3% feel very safe in public spaces at night compared to 28.4% in 2021
Feeling safe in and around your local shopping centre	66.8% feel very safe in their local shopping centre compared to 62.2% in 2021
In parks and open spaces	63.9% feel very safe in parks and open spaces compared to 56.4% in 2021
Travelling on or waiting for public transport	50.1% feel very safe while travelling on or waiting for public transport compared to 44.7% in 2021
Feeling unsafe in public areas at night	20% feel unsafe at night
Most common reasons for feeling unsafe	<ol style="list-style-type: none"><li>1. 33% Drugs and alcohol</li><li>2. 25% Concerns about people</li><li>3. 10.7% Perception of safety at night and lighting issues</li><li>4. 9.8% Crime and policing issues</li></ol>

# Perceptions of safety in Frankston City

## Annual Community Satisfaction Survey 2022



PERCEPTION OF SAFETY IN ALL  
PUBLIC AREAS HAS INCREASED  
LOWER THAN METRO AVERAGE

FEMALES FEEL LESS SAFE THAN  
MALES IN ALL PUBLIC PLACES  
BOTH HAVE IMPROVED SINCE 2021

FEELING 'VERY SAFE' AT NIGHT  
INCREASED BY 34%

FEELING 'VERY SAFE' AT THE  
BEACH AND FORESHORE  
INCREASED BY 18%

FEELING 'VERY SAFE' AT WELLS ST  
ENTERTAINMENT PRECINCT  
INCREASED BY 14%

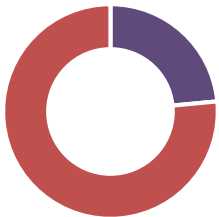
Location	2021	2022	% Change
During the Day	70.4%	76.6%	8.81%
In and around your local shopping centre	62.2%	66.8%	7.40%
In parks and open spaces	56.4%	63.9%	13.30%
How safe do you feel overall*	-	62.8%	-
At the beach and foreshore	55.4%	65.6%	18.41%
Bayside shopping Centre	54.0%	58.7%	8.70%
Wells street Entertainment Precinct	47.3%	54.1%	14.38%
Travelling on/waiting for public transport	44.7%	50.1%	12.08%
At night	28.6%	38.3%	33.92%

\*New question in 2022

- Less than half of all respondents (38%) felt safe at night
- Increased number of people feeling 'unsafe' at the beach and foreshore, and in parks and open spaces
- Top 3 issues for Frankston City
  1. Traffic management 9.5%
  2. Safety, policing and crime 8.3%
  3. Car parking 6.0%
  4. Roads and maintenance and repairs 5.4%

# Gender snapshot\*

\* See slide 27 for Family Violence gender data



**Alleged offender incidents**  
Crime Statistics Agency

Females	Males
1,090	3,549



Both decreasing over time



**Perception of safety at night**  
(Rating 0-10)  
Frankston City Council Community Satisfaction Survey

Females	Males
6.18	6.67

7.3%

Females feel less safe than males at night



**Lifetime risk of harm from alcohol**  
Victorian Population Health Survey 2017

Females	Males
56.0%	74.6%

18.6%

Males at greater lifetime risk of harm from alcohol



**Deaths related to alcohol and illicit drugs 2011-2020**  
AODStats

Females	Males
1,055	963

9.5%

More female deaths related to alcohol and illicit drugs

## In Frankston City:

Males are more likely than females to both commit and be the victim of criminal incidents

Females feel less safe than males in all public places, particularly at night

Perceptions of safety at night have improved from 2021 for both females and males

Males are at greater risk of alcohol related harm and more likely to have an accident or injury from a single occasion of drinking alcohol

Compared to males, females have higher rates of death associated with alcohol and illicit drugs

Between 2016 – 2021 males were three times more likely than females to die due to a road accident  
(TAC Stats)