

George Pentland Botanic Gardens

MASTER VISION

NOVEMBER 2021



MALA STUDIO LANDSCAPE ARCHITECTURE & URBAN DESIGN

Contents

1. Project Background	03
a) Introduction	
b) Existing Site Conditions	
c) Site Analysis	
2. Master Vision	07
a) Landscape Vision and Principles	
b) Enable Rich Experiences	
c) Resolve Pedestrian Networks	
d) Master Vision Plan	
e) Functional Arrangement	
f) Site Issues and Opportunities	

3. Precincts and Priority Projects	15
a) Western Precinct	
b) Central Precinct	
c) Eastern Precinct	
Priority Projects	
A: Arrival at The Western Entry	
B: Western Events and Children’s Garden	
C: Intimate Events & Picnic Lawns	
D: Open Events Lawn	
E: Rainforest and Water Spine Precinct	

1. Project Background

1.a Introduction

PROJECT CONTEXT

Home to a large array of Australian native plants, the George Pentland Botanic Gardens are a beautiful and relaxing place to witness the ever-changing seasons and developing botanic displays.

The gardens offer a significant recreational resource for all ages, and host a unique collection of plants, focused on the Mornington Peninsula and southeastern Australia.

In recent years, significant capital investment has seen the eastern half of the gardens upgraded, including a new playground, paths, shelter, rain garden and lake upgrades and BBQ amenities.

However, the western half of the gardens requires investment to provide equitable access, improved street presence, practical upgrades for events and a greater network of circulation that will allow the community to access many beautiful areas of the botanic gardens that are presently hidden or inaccessible, particularly in wet weather due to ground conditions.

As Frankstons Metropolitan activity centre continues to grow as a significant metropolitan centre, one that offers opportunity for a meaningful outdoor lifestyle, the George Pentland Botanic Gardens features as a key part of a connected open space network.

An upgrade of the gardens will elevate this rich landscape in the eyes of the public, encouraging visitation and interaction from nearby residential, health and commercial communities.

SITE CONTEXT

The George Pentland Botanic Gardens (GPBG) occupy a 7.5-hectare site on the southeastern edge of the Frankston Major Activity Centre (FMAC), forming a highly valuable regional open space in the Frankston municipality.

GPBG is the key green space within the immediate Frankston Health and Education Precinct. It is the upper link in a chain of green spaces including Beauty Park, Frankston Park and the Frankston Waterfront.

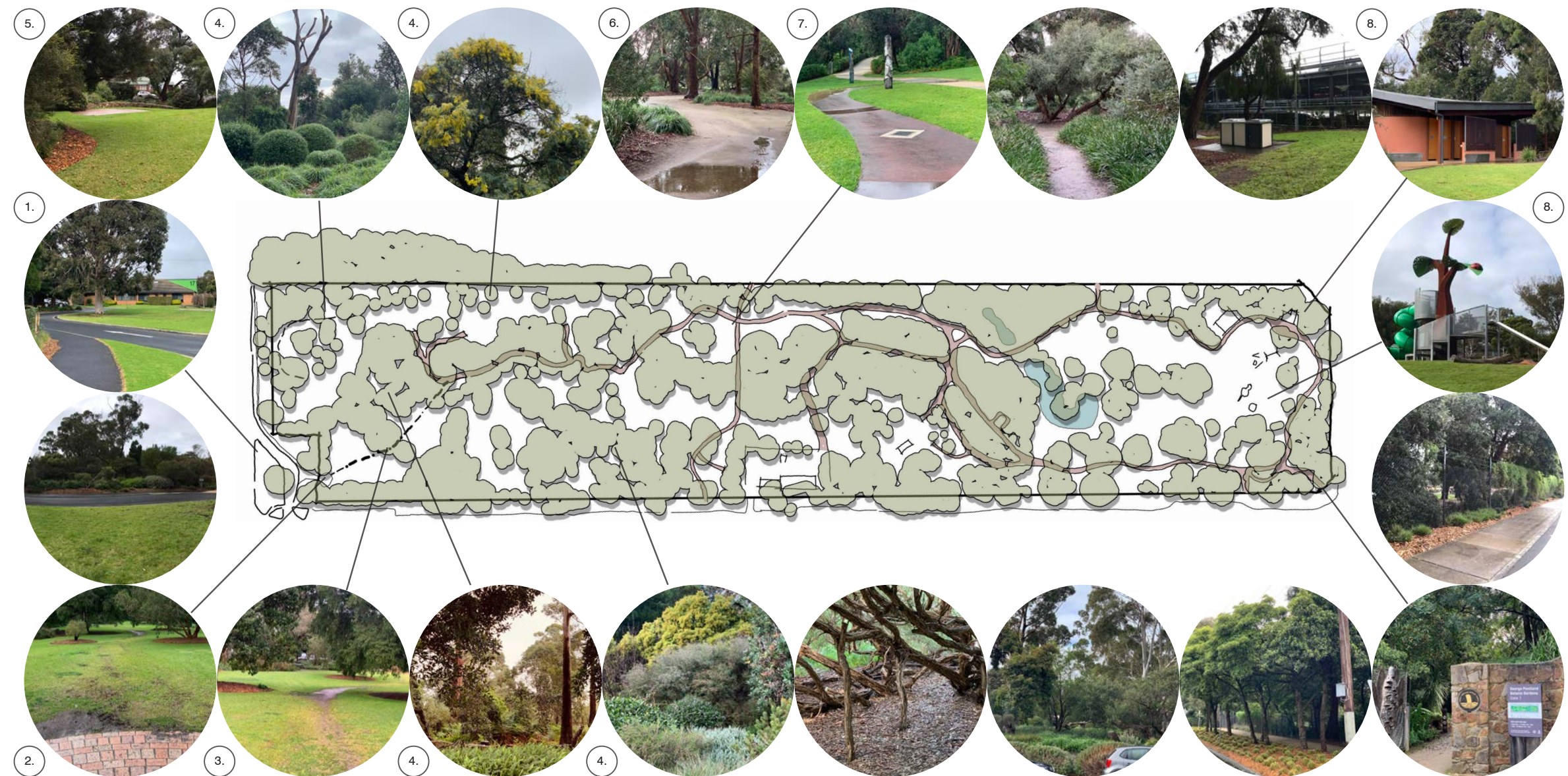
The site was at one time part of a nine-hole golf course and became known as the George Pentland Botanic Gardens in 1975. The GPBG's were named after former Shire Secretary and Town Clerk of the City of Frankston, George Pentland.

The George Pentland Botanic Gardens are sited on the traditional lands of the Bunurong people of the Kulin nation. There is an opportunity to consult with traditional owners in future park upgrades to enhance the educational and cultural opportunities within the gardens.

- 1. George Pentland Botanic Gardens
 - 2. Frankston Hospital
 - 3. Future Health And Education Precinct
 - 4. Frankston Metropolitan Activity Centre
-  Potential Future Open Space Connections



1.b Existing Site Conditions



KEY OBSERVATIONS AND OPPORTUNITIES

- 1.**
Observation: Poor street presence, unremarkable planting and obscured gate entrance.
Opportunity: Increase street presence and major entry
- 2.**
Observation: No existing path from western gate. Eroded lawns and mud tracks.
Opportunity: Introduce DDA primary path connection
- 3.**
Observation: Lack of pause moments or public furniture
Opportunity: Create resting moments under feature trees near path of travel.
- 4.**
Observation: Poor access through significant forest cluster
Opportunity: Create secondary exploratory paths and forest openings to highlight collection
- 5.**
Observation: Underwhelming events area with lack of connection, small hardstand, proximity of fencing, and poor ground conditions.
Opportunity: Improve access and events logistics, identify intuitive 'outdoor rooms' and leverage diversity of backdrops and settings.

- 6.**
Observation: Disconnected paths throughout.
Opportunity: link and upgrade paths, providing DDA connection as major path, and ancillary paths through botanic zones.

- 7.**
Observation: Some underwhelming integration of indigenous connection to country.
Opportunity: Co-create leading educational nature play and education circuit through endemic planting zones.

- 8.**
Observation: Prescriptive play and poorly integrated barbecue areas adjacent car parking
Opportunity: Weave botanic collections around new amenities. Enhance social amenities into more compelling settings.

1.c Site Analysis

George Pentland Botanic Gardens consist of a number of zones, loosely defined by their functionality.

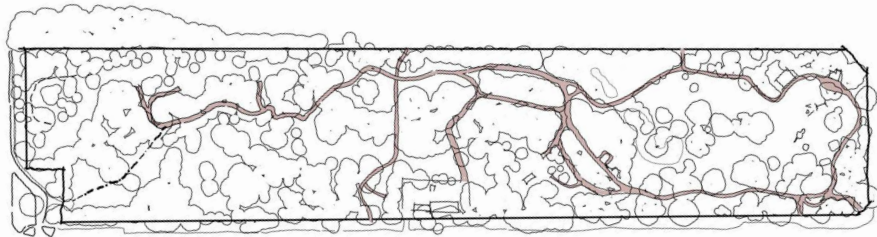
However due to the poor connectivity of paths, much of the gardens isn't experienced by the majority of people who visit. There is an opportunity to enhance this local asset, which has the potential to connect and enrich public life. Improving the connections and amenity will expand the experiences available in the garden and provide for a greater diversity of user groups.

Botanic Gardens could be defined as “institutions holding documented collections of living plants for the purposes of scientific research, conservation, display and education.”

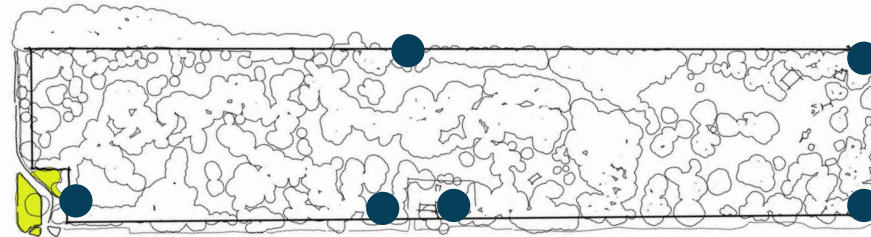
<https://www.anbg.gov.au/botanic-gardens/what-is-a-botanic-gardens.html>

There is an opportunity to improve the botanical function of the George Pentland Botanic Gardens to improve education opportunities and enhance its profile as a destination for the local and broader community.

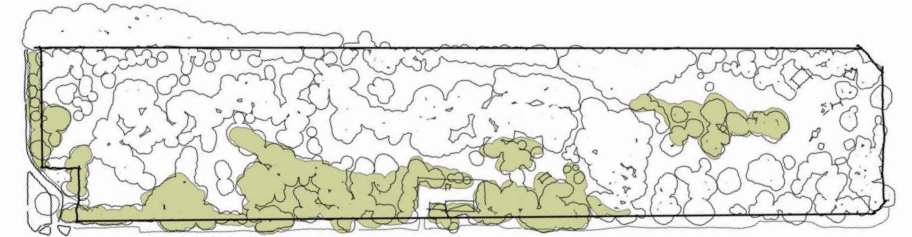
Existing Broken Path Network



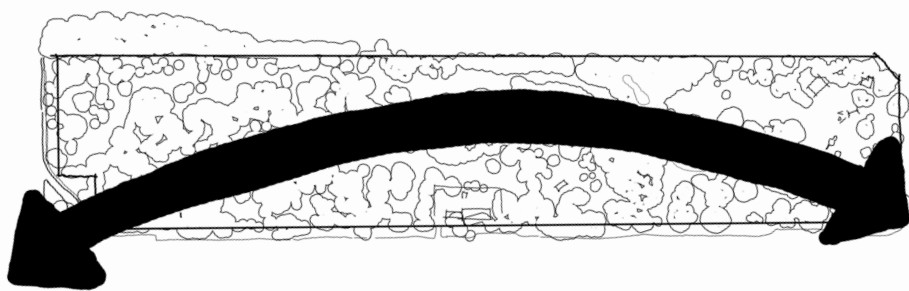
Entries



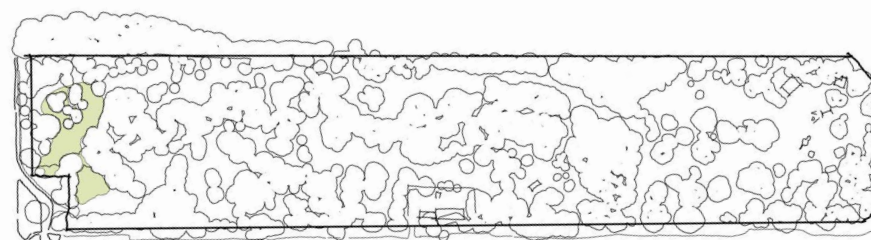
Periphery botanic collections



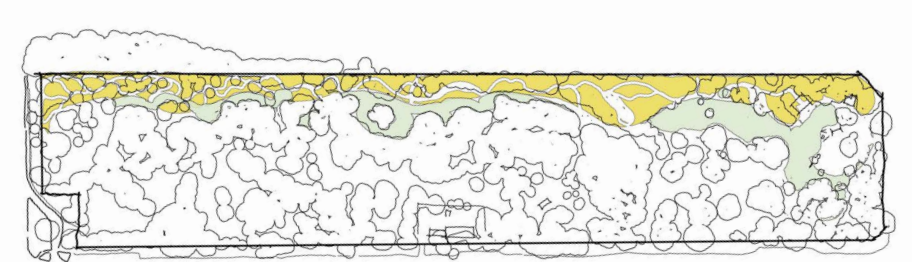
Predominant user pattern due to path network



Events lawns



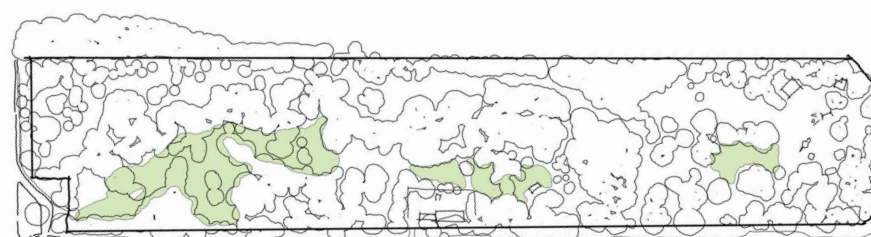
Northern Boundary - predominately endemic collections



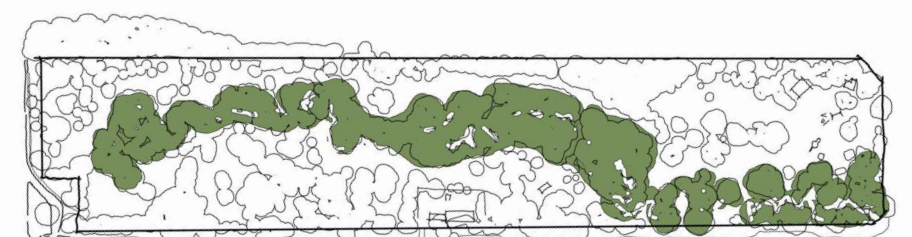
Subsequent neglected garden spaces



Picnic Lawns

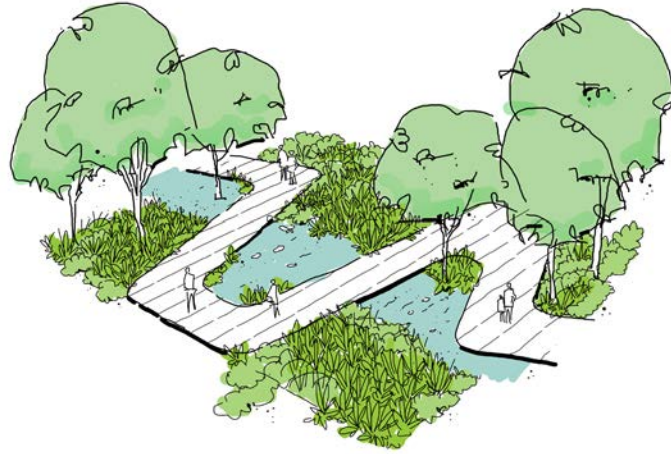


Major forested spine



2. Master Vision

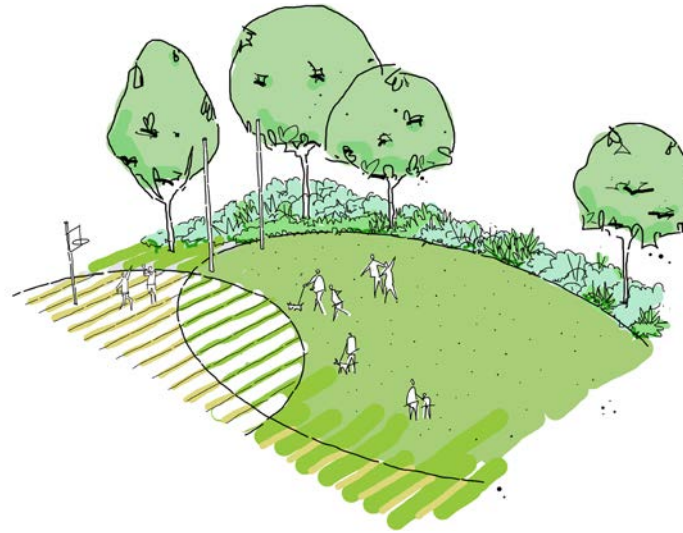
2.a Landscape Vision and Principles



Awareness and Access

Connect all members of the community to the gardens and through the gardens.

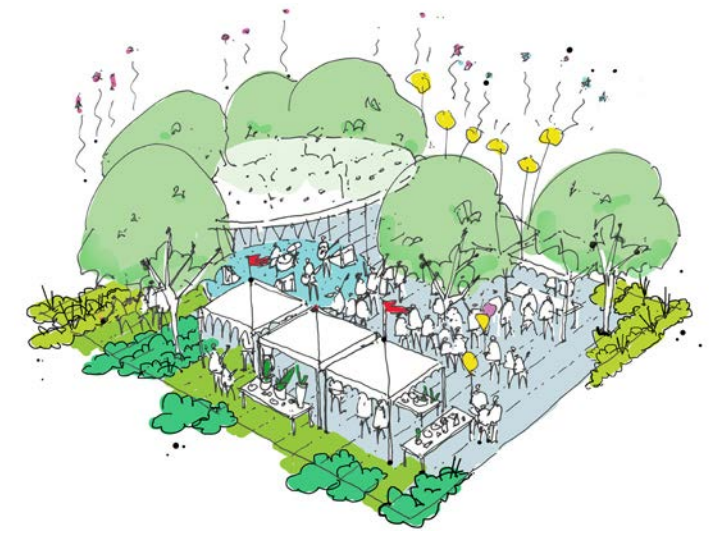
- Improved street presence at Western Entry
- Wayfinding Signage and supporting digital platforms
- Iconic artwork / entry feature
- Upgraded sections of site fencing
- Vehicle loading zones for events
- DDA crossovers
- Traffic Calming
- Day to day economic activities i.e Kiosk / Coffee Cart
- Event logistic facilitation



Multi-use

Enable diverse use and appreciation of the gardens in all seasons.

- Create conducive conditions of appropriate economic and cultural activity
- Landscape opportunities designed to the anticipated user patterns of the vicinity, maximising community benefit at all times of day and into the evening.
- Allow for all types of ages and abilities with passive and more active landscape zones
- Create all weather ground and furniture conditions, acknowledging the Melbourne climate.
- Supporting digital platforms and marketing targeted to diverse user groups.

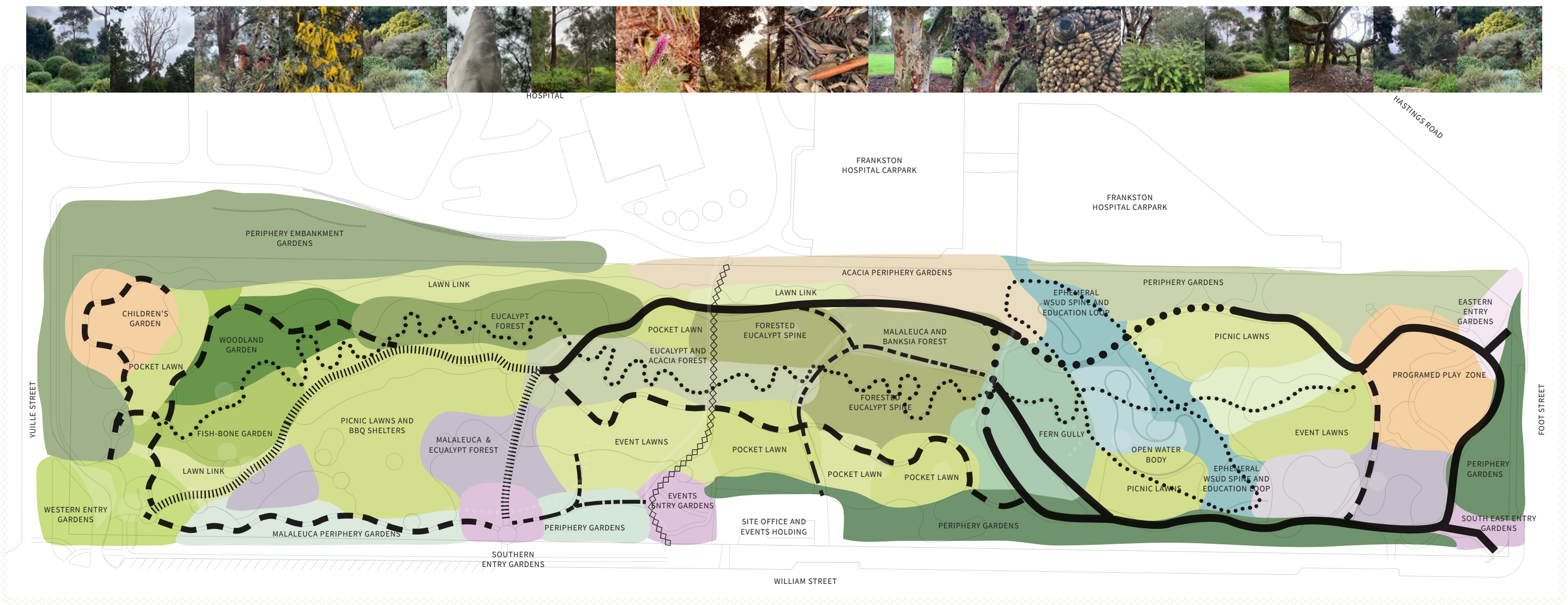


Eventful

Enliven suitable zones of gardens and entries with opportunities for events and day to day economic activity

- Encourage day-to-day interactions of people and place.
- Variety of landscape conditions encouraging multiple modes of occupation from small events to larger gatherings
- Investigate suitable daytime and night time events and acknowledge their different requirements
- Create multiple opportunities for events in different settings, leveraging off the diverse worlds within the Botanic Gardens
- Supporting digital platforms and marketing targeted to diverse potential events users. FAQs

2.b Connecting Different Worlds

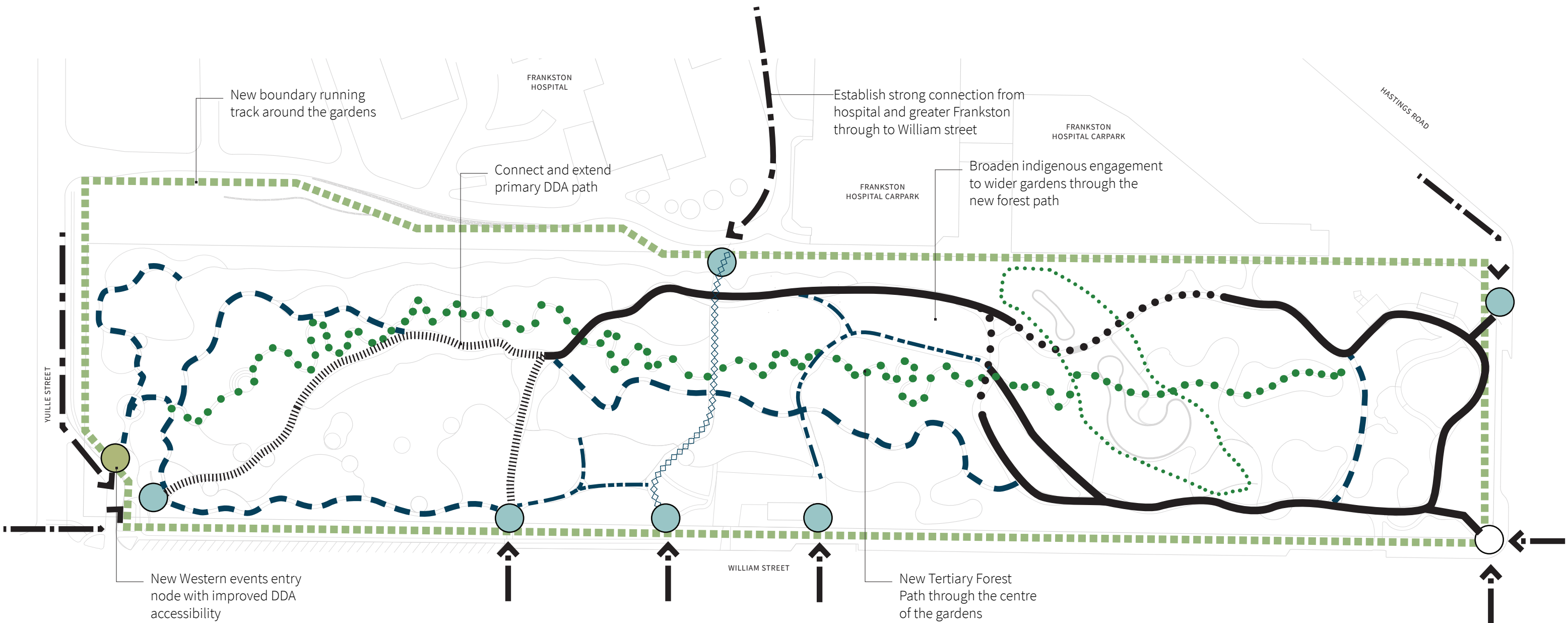


Connecting different worlds

The first step in understanding the gardens is to understand the unique qualities of each planting collection. In order to bring visitors through the existing rich diversity of botanic collections, a series of DDA accessible paths and secondary path connections is proposed. Improved street awareness and connectivity to the west will amplify the presence and accessibility from all directions.



2.c Resolve pedestrian networks



Garden Journeys

The key to this master vision is to resolve the disconnected gardens. By upgrading existing pathways to DDA access, adding new missing links and adding loops and discovery connections, The George Pentland Botanic Gardens will be accessible to all users and community members.

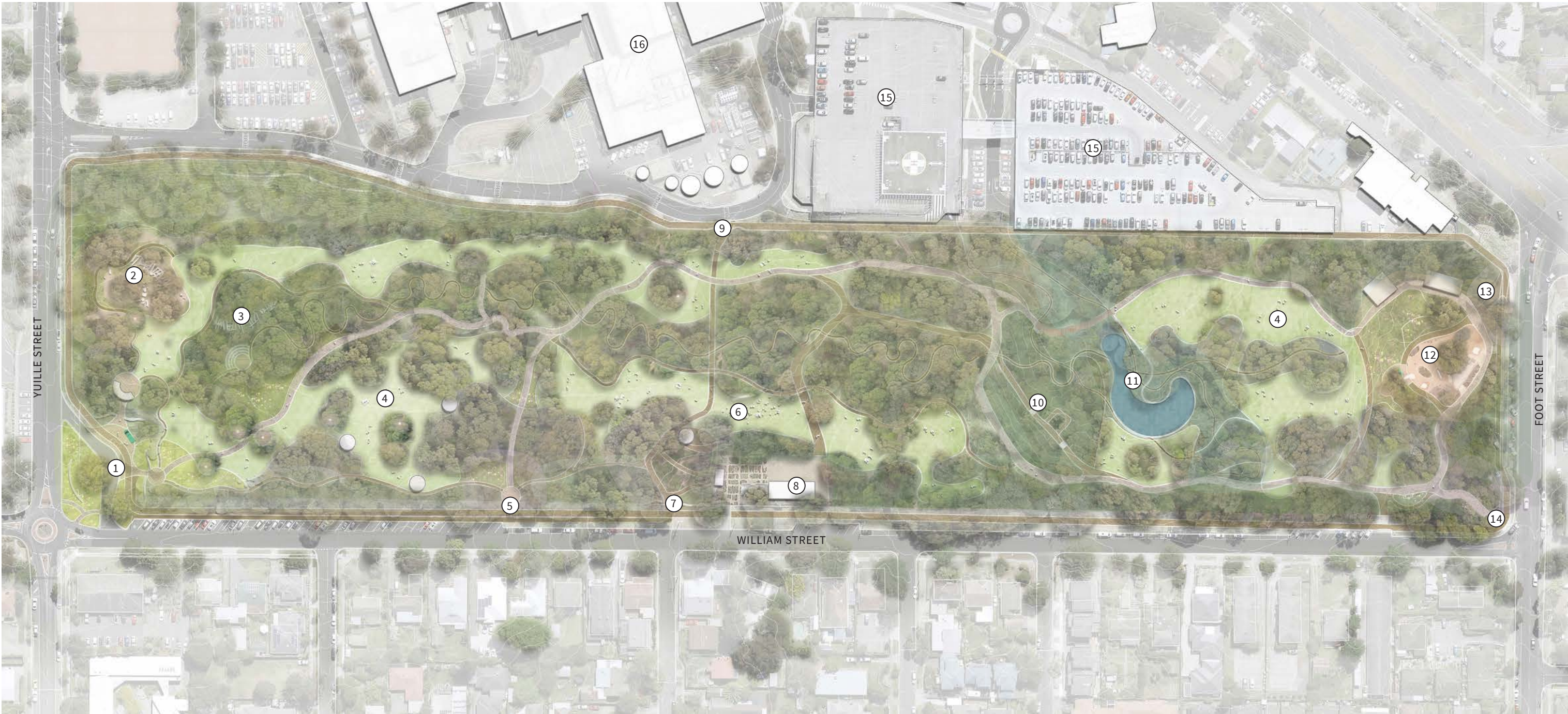
EXISTING PEDESTRIAN PATHS

- ENTRIES - IMPROVE SENSE OF ARRIVAL
- PRIMARY - REBUILD EXISTING ACCESS PATH TO DDA
- PRIMARY - EXISTING DDA ACCESS PATH
- SECONDARY - EXISTING SECONDARY PATH
- SECONDARY - REBUILD EXISTING ACCESS PATH TO DDA
- ENTRY NODE - EXISTING
- ENTRY NODE - UPGRADED

PROPOSED CONNECTIONS

- PRIMARY - NEW DDA ACCESS PATH
- SECONDARY - NEW SECONDARY PATH
- TERTIARY - NEW FOREST PATH
- NEW BOUNDARY RUNNING TRACK(1.47km)
- ENTRY NODE - NEW

2.d Master Vision

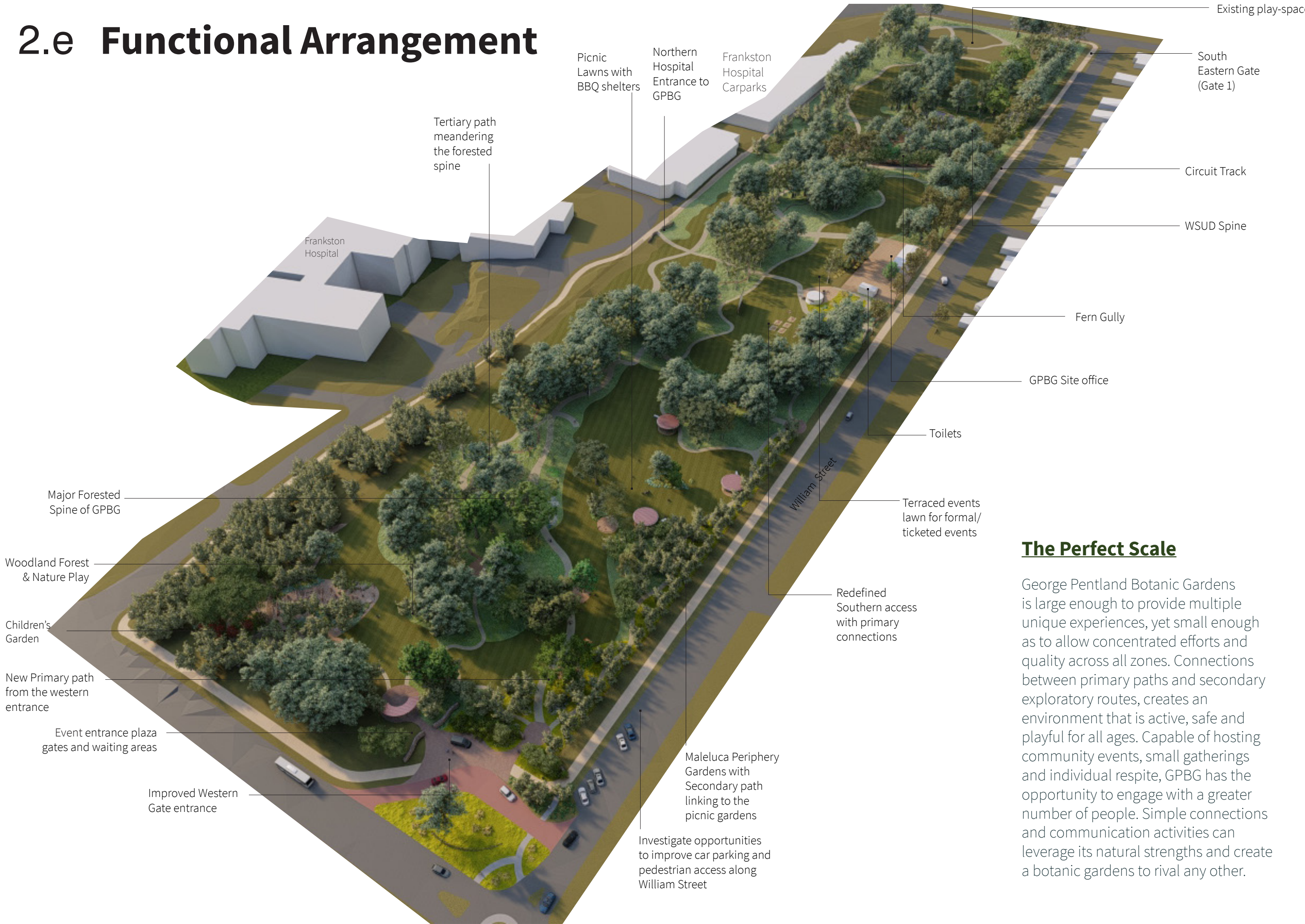


Garden Journeys

A connected park of diverse experiences and opportunities. A unique botanical gardens, with a distinct collection of endemic and indigenous plant communities. A premier green space for Frankston, known to all and enjoyed by all throughout the year.

- | | | |
|-----------------------------|----------------------------------|---------------------------------|
| ① GATE 7: WESTERN ENTRANCE | ⑧ SITE OFFICE | ⑮ HOSPITAL MULTI LEVEL CAR PARK |
| ② CHILDREN'S GARDEN | ⑨ GATE 8: NORTHERN ENTRANCE | ⑯ FRANKSTON HOSPITAL |
| ③ WOODLAND PLAY | ⑩ FERN GULLY | |
| ④ PICNIC LAWNS | ⑪ RAINFOREST AND WATER SPINE | |
| ⑤ GATE 6: SOUTHERN ENTRANCE | ⑫ PLAY SPACE | |
| ⑥ EVENT LAWNS | ⑬ GATE 10: EASTERN ENTRANCE | |
| ⑦ EVENTS ENTRANCE | ⑭ GATE 1: SOUTH EASTERN ENTRANCE | |

2.e Functional Arrangement



The Perfect Scale

George Pentland Botanic Gardens is large enough to provide multiple unique experiences, yet small enough as to allow concentrated efforts and quality across all zones. Connections between primary paths and secondary exploratory routes, creates an environment that is active, safe and playful for all ages. Capable of hosting community events, small gatherings and individual respite, GPBG has the opportunity to engage with a greater number of people. Simple connections and communication activities can leverage its natural strengths and create a botanic gardens to rival any other.

2.f

Site- Issues and Opportunities

Opportunities & Recommendations

The Botanic Gardens is a regional destination and important open space in close proximity to the Frankston Metropolitan Activity Centre. It is an important destination for the community to gather, learn and play. The following opportunities and recommendations have been developed to identify projects to enhance the gardens and provide a framework for improvements to improve the existing functions and activity that the gardens already provide.



1. Botanic Collection & Function

The role of a Botanic Garden is to document “collections of living plants for the purposes of scientific research, conservation, display and education” (Botanic Gardens Conservation International). There is the opportunity to improve the Botanical functions of the Gardens to strengthen its role as a regional destination and space for the community to gather and learn.

Recommendations:

- Develop a Botanical Master Plan for the collection to assess the existing collection, its vulnerability in a changing climate and develop a plan for the curation and future implementation of the collection to:
 - Showcase Frankston’s local natural environment/s
 - Consult with Traditional Owners to investigate opportunities to incorporate cultural knowledge and stories and provide a deeper connection to country.
 - Provide space/s for Frankston Hospital staff and patients for rest, rehabilitation
 - Establish long term planting strategies to set up the collection for a sustainable future in a changing climate.
- Implement signage for tree and plant identification and education
- Investigate opportunities to facilitate horticultural experience and education for all ages. From nature play and education for children and young people to training and education for environmental groups and the broader community.
- Investigate opportunities for engagement with digital platforms to enhance the educational integration throughout the site, raise the social awareness of gardens and to provide an educational resource for the broader community
- Investigate opportunities to improve stormwater harvesting opportunities, through the Frankston South Drainage Strategy Project, to provide recycled water for irrigation, address flooding & overland flow issues and improve water quality prior to discharge into Port Phillip Bay. Ensure any storm water improvements also align with the vision for the lake precinct and contribute to the overall experience and education function of the Botanic gardens.
- Develop community awareness and education around water conservation and management.





2. Improved Pedestrian Network & Accessibility

There is an opportunity to improve the existing pedestrian network to improve all abilities access to and within the gardens allowing greater access to the gardens for more of the community.

Recommendations:

- Review existing car parking and connectivity into the gardens, investigate opportunities to provide additional car parking and an improved pedestrian connection along Williams street and into the Gardens.
- Investigate opportunities to implement path upgrades to improve all abilities access within the garden.
- Investigate opportunities to improve connections into the Gardens from hospital
- Investigate opportunities to improve the Tertiary and secondary path network and discovery paths to encourage exploration of the Gardens
- Review existing internal path treatments in consideration with ongoing operational and maintenance requirements



3. Furniture & Amenities

While the Gardens has some unique distinctive features, the general amenity across the Gardens is varied and in some instances inconsistent with its status as a regional destination. There is an opportunity to improve the furniture standard and overall amenity for visitors across the gardens.

Recommendations:

- Develop a furniture and materials palette for the Gardens to provide a complimentary and distinctive furniture palette across the gardens. This would consider furniture such as benches, picnic tables, drinking fountains, BBQ's, bollards, shelters and park lighting
- Investigate opportunities for cultural integration and interpretation in key elements in consultation with Traditional Owners
- Decommission the existing bluestone toilet and provide new toilet facilities adjacent the Site compound to improve passive surveillance and provide a toilet for the proposed future events space.
- Provide seating for hospital staff, visitors and patients
- Enhance gateways and fences to provide consistent and secure boundary fencing and gates to new entrances
- Review Wayfinding and signage suite to deliver intuitive site-wide navigation & wayfinding and integrated signage



4. Events & Activities

The Gardens is a regional destination in close proximity to the Frankston Metropolitan Activity Centre. It currently hosts a range of events and there is an opportunity to improve how these are facilitated with improved access and infrastructure.

Recommendations:

- Opportunity to improve the Western entrance to better provide for Picnics, weddings, and children's parties.
- Opportunity for improvements at the Western entry to facilitate a small commercial activation such as Coffee cart, or food van.
- Opportunity for a new Kiosk and dedicated events space to provide for a more permanent activation for a commercial activity, educational tours, community gatherings and events such as open-air cinema & music. This would need to consider event facilitation including logistics, waste and service provision.

3. Precincts & Priority Projects

3.a

Western Precinct

The Western precinct will become a diverse and enriched counterpart to the eastern precinct with the redevelopment of the western entrance zone. The community will enter through an immersive entrance experience with reconnected primary paths through to the entire gardens. Pockets of intimate gathering zones and a new immersive discovery garden will enliven the Western precinct. The improved amenity and functionality of the existing events space will provide for events such as weddings and will also provide a space for commercial activation (food van or Coffee cart) to provide a new experience and align with the gardens status as a regional destination.

- PRIORITY PROJECTS
- A

WESTERN ENTRANCE
- B

WESTERN EVENTS AND CHILDREN'S GARDEN
- C

INTIMATE EVENTS & PICNIC LAWNS
- LEGEND
- 1

LAWN
- 2

DECK SEAT
- 3

ENTRANCE GATES
- 4

TOILETS
- 5

EXISTING FORESTED SPINE
- 6

BBQ / SHELTER
- 7

BOUNDARY TAN TRACK
- 8

ENTRY GARDEN
- 9

NEW CHILDREN'S GARDEN & PLAY
- 10

1m FOREST PATH
- 11

1.5M SECONDARY PATH
- 12

2.5 PRIMARY PATH
- 13

INVESTIGATE OPPORTUNITIES TO PROVIDE IMPROVED ACCESS AND ADDITIONAL CAR PARKING ON WILLIAMS STREET WITH INTEGRATED WATER SENSITIVE URBAN DESIGN
- 14

EVENT SPACE
- 15

HARDSTAND FOR EVENT ACCESS OR COMMERCIAL ACTIVITY SUCH AS A FOOD VAN
- A

ARTISTS IMPRESSION A:
WESTERN ENTRANCE
- B

ARTISTS IMPRESSION B:
WESTERN EVENTS AND CHILDREN'S GARDEN
- C

ARTISTS IMPRESSION C:
INTIMATE EVENTS & PICNIC LAWNS



3.b

Central Precinct

The Central precinct sees the main work centered around creating an entertainment and community precinct focusing around the natural undulation of the sloped lawns and the existing site depot works being divided into public on-site native nursery. The connection from the Hospital to William street will be strengthened encouraging workers to passively use the gardens.

PRIORITY PROJECTS

- C** INTIMATE EVENTS & PICNIC LAWNS
- D** OPEN EVENT LAWNS

LEGEND

- ① LAWN
- ② DECK SEAT
- ③ ENTRANCE
- ④ TOILETS
- ⑤ EVENTS LAWN
- ⑥ BBQ / SHELTER
- ⑦ LAWN LINKS
- ⑧ ENTRY GARDEN
- ⑨ OPEN WATER BODY
- ⑩ 1m FOREST PATH
- ⑪ 1.5M SECONDARY PATH
- ⑫ 2.5 PRIMARY PATH
- ⑬ EDUCATION LOOP
- ⑭ SITE OFFICE
- ⑮ FERN GULLY
- ⑯ KIOSK

- D** OPEN EVENTS LAWN



3.c

Eastern Precinct

The Eastern Precinct is where a lot of the focus of the gardens has previously been, consisting of toilet facilities, picnic areas, and programed play zones. A focus of this precinct would be on the upgrade of the Rainforest and Water spine area. Creating an interactive education loop that enables all users to look, see, and touch water processes of the site such as water-sensitive urban design, ecological features, flora, and fauna. Looping through the existing Rainforest Spine, reactivating a strong feature of the site in and around the existing renewed open water body.

PRIORITY PROJECTS

- C** INTIMATE EVENTS & PICNIC LAWNS
- E** RAINFOREST AND WATER SPINE PRECINCT

LEGEND

- ① LAWN
- ② DECK SEAT
- ③ ENTRANCE
- ④ TOILETS
- ⑤ AMPHITHEATER
- ⑥ BBQ / SHELTER
- ⑦ FERN GULLY
- ⑧ ENTRY GARDEN
- ⑨ OPEN WATER BODY
- ⑩ 1m FOREST PATH
- ⑪ 1.5M SECONDARY PATH
- ⑫ 2.5 PRIMARY PATH
- ⑬ EXISTING PROGRAMED PLAY
- ⑭ WSUD SPINE
- ⑮ PICNIC FOREST

- E** RAINFOREST AND WATER SPINE





Priority Projects

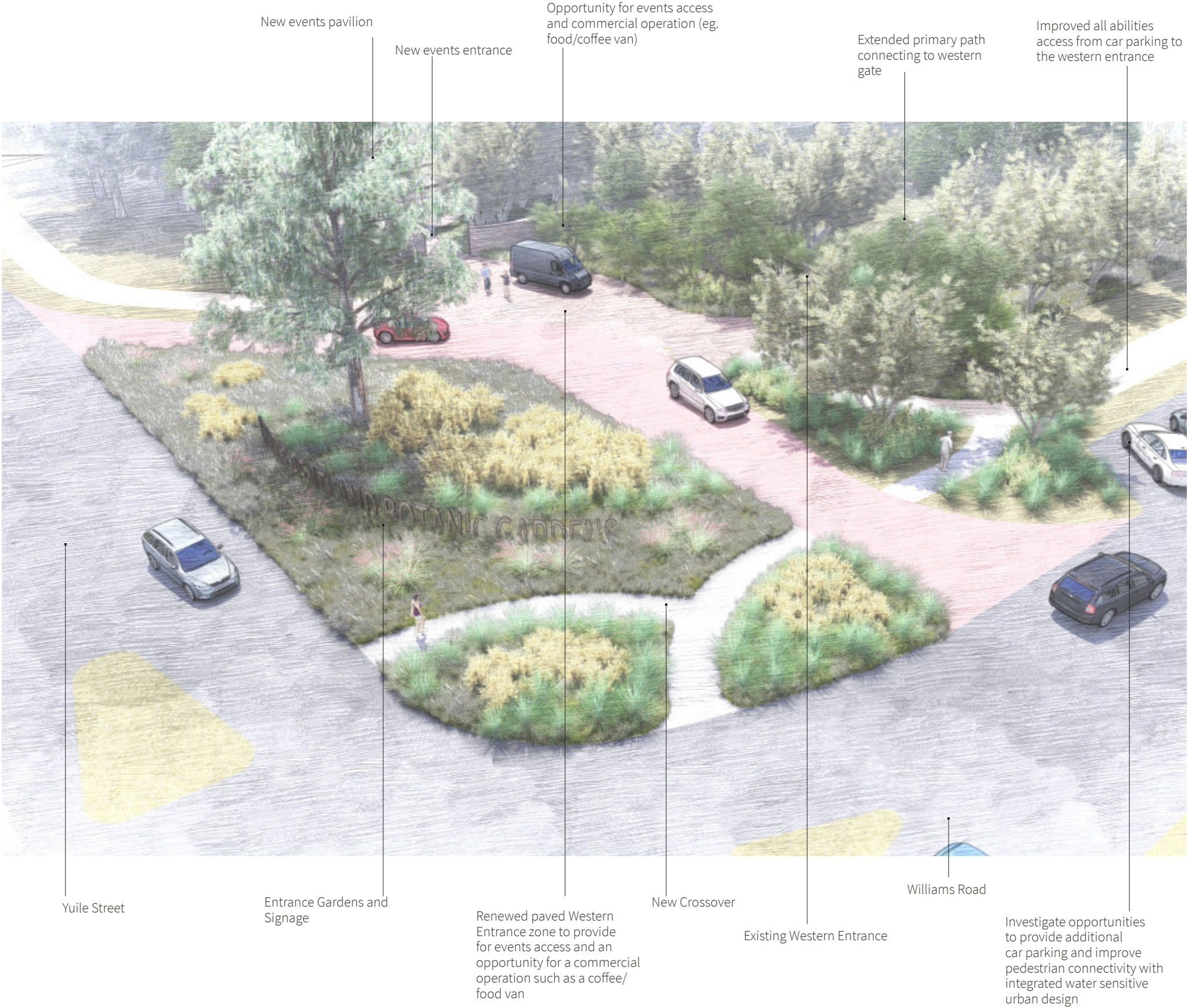
A. Arrival at the Western Entry

The re-development of the Western entrance of George Pentland Botanic Gardens improves the range of amenities and presence for the community.

The entry gardens and street frontages will be refreshed with new planting, improved entry points and access, new paved drop-off zones with improved signage improving safety and access to the gardens for all users.

Landscape Recommendations

- Create new dedicated Western Events Entrance
- Improve drop off zones and improved access and connectivity to the gardens
- Improve DDA connection to carparking
- Increase the season street planting and include clear signage for the gardens
- Generous hard-paved areas for flexibility of use including parking for future commercial activation
- Connect to Boundary running track
- Extend the 45 degree parking on William street
- Connect Primary path to existing paths



Priority Project A: Artists Impresion Perspective of Western Entrance



Artists Impresion A: Western Entrance

B. Western Events and Children’s Garden

A Children’s adventure play precinct will celebrate learning and imaginative play through nature, highlighting the environmental and botanical nature of George Pentland Botanic Gardens. Immersed and nestled into the existing gardens, children traverse, balance, run, play and learn through adventure and explorative challenges. The Children’s Garden will be encompassed by passive lawns and gathering spaces creating a precinct for the whole family. Small intimate events will be encouraged in this area with a dedicated events pavilions and a new gated entrance.

Landscape Recommendations

- Build an immersive and nestled children’s discovery garden within the existing planting and trees of the West
- Plant tactile and interactive planting to encourage education and playful experiences for users
- Re-use timber from storm to nature play elements
- Build a new toilet facilities for the western precinct
- Build and incorporate intimate events nodes and shelters
- Build a forest event node with light weight deck structure to sit in the forested spine
- Connection to picnic lawns and path networks for passive surveillance



Priority Project B: Artists Impresion Perspective of Western Events and Children’s Garden



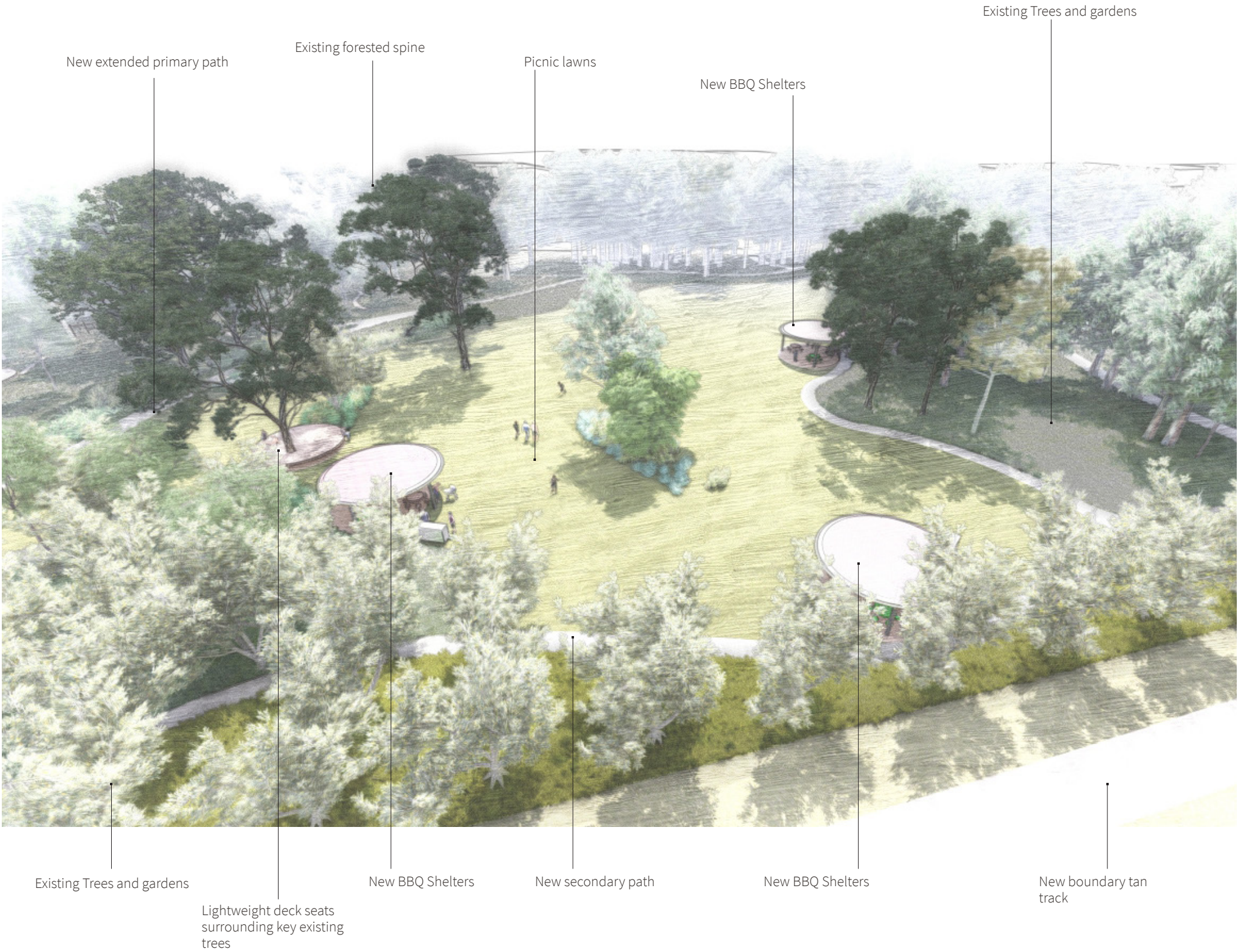
Artists Impresion B: Western Events and Children's Garden

C. Intimate Events & Picnic Lawns

New paths, refreshed lawns and barbecue shelters will enliven lawn spaces, improving the passive recreation opportunities in the George Pentland Botanic Gardens for all users. Lawns of varied sizes provide spaces for all types of intimate events and gatherings.

Landscape Recommendations

- Build light weight deck seats surrounding key existing trees
- Build new BBQ shelters dotted around picnic lawns for all year use
- Incorporate water fountains and wash stations in key areas for easy use of lawns and facilities
- Use garden beds and trees to define multiple picnic lawn spaces around the gardens
- Ensure easy connection to Gates and parking for easy drop off and pick up



Priority Project C: Artists Impresion Perspective Intimate Events & Picnic Lawns



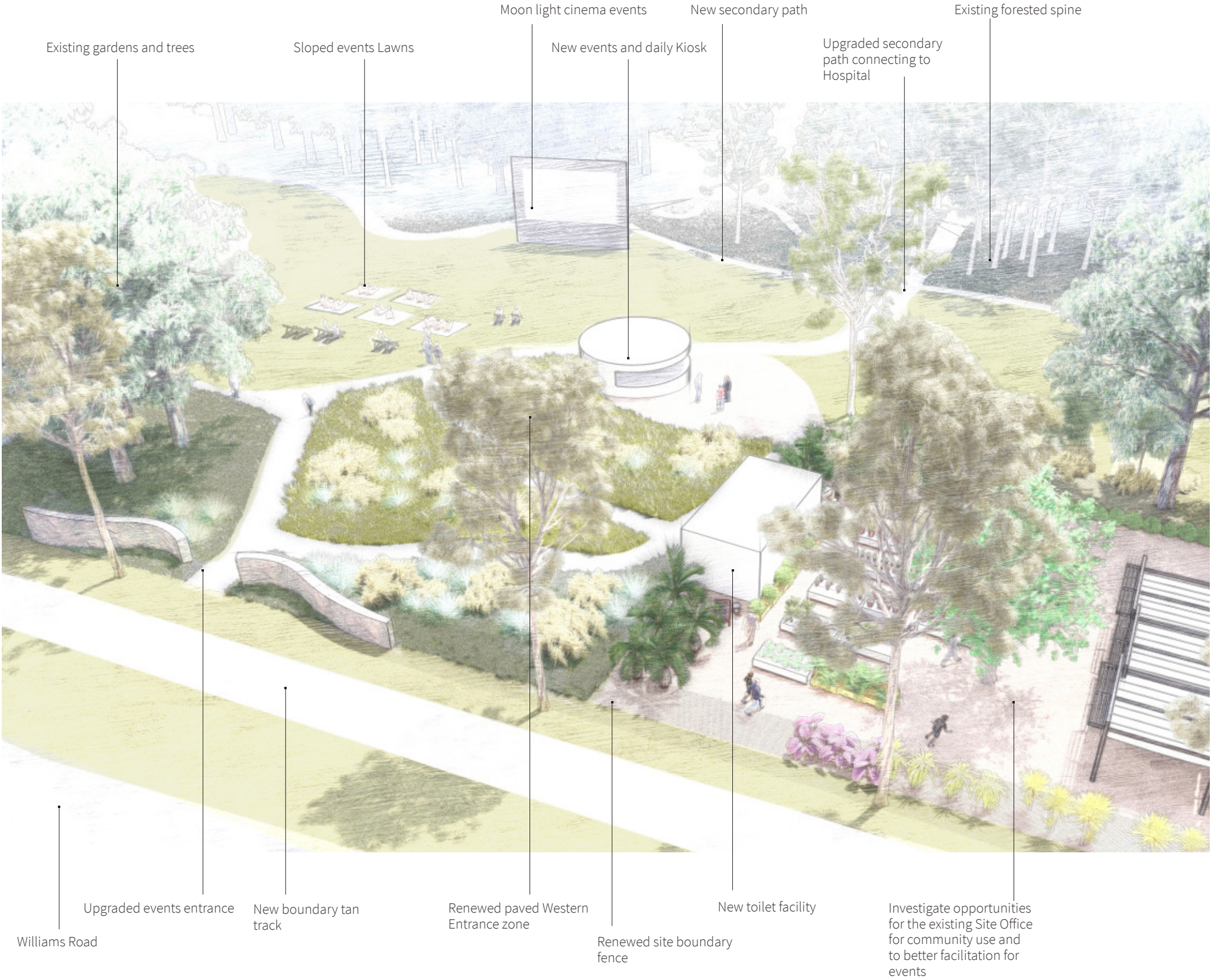
Artists Impresion C: Intimate Events & Picnic Lawns

D. Open Event Lawns for the whole community

The sloping lawns nestled into the natural topography of the site creates amphitheatres and events spaces for public gatherings. The precinct is activated daily with a kiosk to supply food and beverage offerings, connecting to the hospital and encouraging the use of nearby picnic lawns. This Kiosk can double as an events office for ticketed events such as moonlight cinema. The existing site depot will house an on-site nursery open to the public, strengthening the communities involvement and connection to the gardens.

Landscape Recommendations

- Investigate opportunities for the existing Site Office & compound for community use and to better facilitate events
- Investigate the feasibility to build a kiosk and relocate toilets to service the events lawn precinct 7 days a week
- Build periphery secondary paths allowing events carts to setup and down various infrastructure for events
- Enhance and strengthen connection through to Frankston Hospital
- Increased seating for the area



Priority Project D: Artists Impresion Perspective of Open Event Lawns



Artists Impresion D: Open Event Lawns

E. Rainforest And Water Spine Precinct

The use of water through the central and eastern precincts of the garden enables visitors to immerse themselves within the ecological wetland environment, whilst facilitating intrigue, engagement and respite. The existing open water body plays a central part within the new educational precinct, forming the water spine of the gardens. Interactive loop networks are woven into the existing forest, fern gully, and WSUD zone encouraging users to partake in education of the water systems.

Landscape Recommendations

- Investigate the opportunity to improve storm water management and onsite water reclamation and reuse.
- Integrate education and interactive aspects and path networks into the system
- Connect to open body of water seamlessly as one system
- Assess overland flows across site and use active water systems to manage water
- Upgrade and repair of conditions of the open water body and surrounds
- Incorporate a discovery water and rainforest trail, creating an immersive and educational loop for all users.
- Create a narrative of water with cascading moments to encourage interaction



Priority Project E: Artists Impresion Perspective of Rainforest and Water Spine Precinct



Artists Impresion D: Rainforest and Water Spine